



[Go to Product page](#)

Datasheet for ABIN657883

anti-CCDC12 antibody (N-Term)

1 Image

Overview

Quantity:	400 µL
Target:	CCDC12
Binding Specificity:	AA 8-36, N-Term
Reactivity:	Mouse
Host:	Rabbit
Clonality:	Polyclonal
Application:	Western Blotting (WB)

Product Details

Immunogen:	This CCDC12 antibody is generated from rabbits immunized with a KLH conjugated synthetic peptide between 8-36 amino acids from the N-terminal region of human CCDC12.
Clone:	RB27381
Isotype:	Ig Fraction
Purification:	This antibody is purified through a protein A column, followed by peptide affinity purification.

Target Details

Target:	CCDC12
Alternative Name:	CCDC12 (CCDC12 Products)
Background:	The exact function of this protein remains unknown.
Molecular Weight:	19181

Target Details

Gene ID: 151903

NCBI Accession: [NP_001264003](#)

UniProt: [Q8WUD4](#)

Application Details

Application Notes: WB: 1:1000

Restrictions: For Research Use only

Handling

Format: Liquid

Buffer: Purified polyclonal antibody supplied in PBS with 0.09 % (W/V) sodium azide.

Preservative: Sodium azide

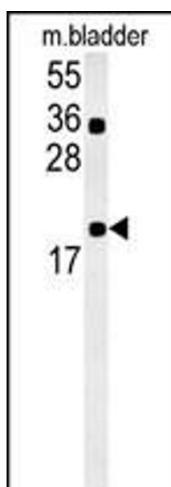
Precaution of Use: This product contains Sodium azide: a POISONOUS AND HAZARDOUS SUBSTANCE which should be handled by trained staff only.

Storage: 4 °C, -20 °C

Storage Comment: CCDC12 Antibody (N-term) can be refrigerated at 2-8 °C for up to 6 months. For long term storage, place the at -20 °C.

Expiry Date: 6 months

Images



Western Blotting

Image 1. CCDC12 Antibody (N-term) (ABIN657883 and ABIN2846838) western blot analysis in mouse bladder tissue lysates (15 µg/lane). This demonstrates the CCDC12 antibody detected CCDC12 protein (arrow).