

Datasheet for ABIN657892  
**anti-PNPLA4 antibody (C-Term)**

## 2 Images

[Go to Product page](#)

## Overview

Quantity:	400 µL
Target:	PNPLA4
Binding Specificity:	AA 171-199, C-Term
Reactivity:	Human
Host:	Rabbit
Clonality:	Polyclonal
Application:	Western Blotting (WB), Immunohistochemistry (Paraffin-embedded Sections) (IHC (p))

## Product Details

Immunogen:	This PNPLA4 antibody is generated from rabbits immunized with a KLH conjugated synthetic peptide between 171-199 amino acids from the C-terminal region of human PNPLA4.
Clone:	RB32515
Isotype:	Ig Fraction
Purification:	This antibody is purified through a protein A column, followed by peptide affinity purification.

## Target Details

Target:	PNPLA4
Alternative Name:	PNPLA4 ( <a href="#">PNPLA4 Products</a> )
Background:	This gene encodes a member of the patatin-like family of phospholipases. The encoded enzyme has both triacylglycerol lipase and transacylase activities and may be involved in adipocyte triglyceride homeostasis. Alternate splicing results in multiple transcript variants. A

## Target Details

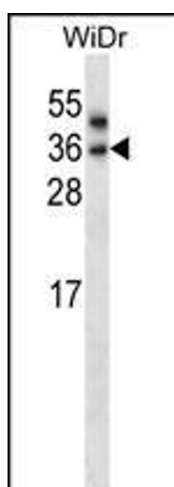
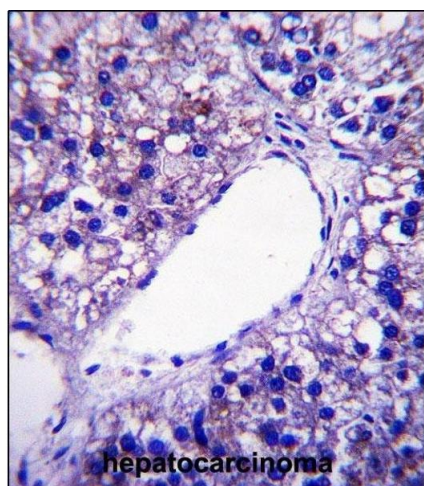
	pseudogene of this gene is found on chromosome Y.
Molecular Weight:	27980
Gene ID:	8228
NCBI Accession:	<a href="#">NP_001135861</a> , <a href="#">NP_001166143</a> , <a href="#">NP_004641</a>
UniProt:	<a href="#">P41247</a>

## Application Details

Application Notes:	WB: 1:1000. IHC-P: 1:10~50
Restrictions:	For Research Use only

## Handling

Format:	Liquid
Buffer:	Purified polyclonal antibody supplied in PBS with 0.09 % (W/V) sodium azide.
Preservative:	Sodium azide
Precaution of Use:	This product contains Sodium azide: a POISONOUS AND HAZARDOUS SUBSTANCE which should be handled by trained staff only.
Storage:	4 °C,-20 °C
Storage Comment:	PNPLA4 Antibody (C-term) can be refrigerated at 2-8 °C for up to 6 months. For long term storage, place the at -20 °C.
Expiry Date:	6 months



#### Immunohistochemistry (Paraffin-embedded Sections)

**Image 1.** PNPLA4 Antibody (C-term) (ABIN657892 and ABIN2846844) immunohistochemistry analysis in formalin fixed and paraffin embedded human hepatocarcinoma followed by peroxidase conjugation of the secondary antibody and DAB staining. This data demonstrates the use of PNPLA4 Antibody (C-term) for immunohistochemistry. Clinical relevance has not been evaluated.

#### Western Blotting

**Image 2.** PNPLA4 Antibody (C-term) (ABIN657892 and ABIN2846844) western blot analysis in WiDr cell line lysates (35 µg/lane). This demonstrates the PNPLA4 antibody detected the PNPLA4 protein (arrow).