

Datasheet for ABIN657901

## anti-GRAMD1A antibody (AA 267-296)



[Go to Product page](#)

### 1 Image

#### Overview

Quantity:	400 µL
Target:	GRAMD1A
Binding Specificity:	AA 267-296
Reactivity:	Mouse
Host:	Rabbit
Clonality:	Polyclonal
Application:	Western Blotting (WB)

#### Product Details

Immunogen:	This GRAMD1A antibody is generated from rabbits immunized with a KLH conjugated synthetic peptide between 267-296 amino acids from the Central region of human GRAMD1A.
Clone:	RB33436
Isotype:	Ig Fraction
Predicted Reactivity:	Rat
Purification:	This antibody is purified through a protein A column, followed by peptide affinity purification.

#### Target Details

Target:	GRAMD1A
Alternative Name:	GRAMD1A ( <a href="#">GRAMD1A Products</a> )
Background:	The exact function of this protein remains unknown.

## Target Details

Molecular Weight:	80680
Gene ID:	57655
NCBI Accession:	<a href="#">NP_001129671</a> , <a href="#">NP_065946</a>
UniProt:	<a href="#">Q96CP6</a>

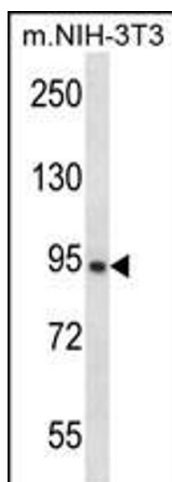
## Application Details

Application Notes:	WB: 1:1000
Restrictions:	For Research Use only

## Handling

Format:	Liquid
Buffer:	Purified polyclonal antibody supplied in PBS with 0.09 % (W/V) sodium azide.
Preservative:	Sodium azide
Precaution of Use:	This product contains Sodium azide: a POISONOUS AND HAZARDOUS SUBSTANCE which should be handled by trained staff only.
Storage:	4 °C, -20 °C
Storage Comment:	GRAMD1A Antibody (Center) can be refrigerated at 2-8 °C for up to 6 months. For long term storage, place the at -20 °C.
Expiry Date:	6 months

## Images



### Western Blotting

**Image 1.** GRD1A Antibody (Center) (ABIN657901 and ABIN2846852) western blot analysis in mouse NIH-3T3 cell line lysates (35 µg/lane). This demonstrates the GRD1A antibody detected the GRD1A protein (arrow).