



[Go to Product page](#)

Datasheet for ABIN657904

## anti-Laminin beta 1 antibody (C-Term)

### 2 Images

#### Overview

Quantity:	400 µL
Target:	Laminin beta 1 (LAMB1)
Binding Specificity:	AA 1691-1720, C-Term
Reactivity:	Mouse
Host:	Rabbit
Clonality:	Polyclonal
Application:	Western Blotting (WB), Immunohistochemistry (Paraffin-embedded Sections) (IHC (p))

#### Product Details

Immunogen:	This LAMB1 antibody is generated from rabbits immunized with a KLH conjugated synthetic peptide between 1691-1720 amino acids from the C-terminal region of human LAMB1.
Clone:	RB33607
Isotype:	Ig Fraction
Purification:	This antibody is purified through a protein A column, followed by peptide affinity purification.

#### Target Details

Target:	Laminin beta 1 (LAMB1)
Alternative Name:	LAMB1 ( <a href="#">LAMB1 Products</a> )
Background:	Laminins, a family of extracellular matrix glycoproteins, are the major noncollagenous constituent of basement membranes. They have been implicated in a wide variety of biological processes including cell adhesion, differentiation, migration, signaling, neurite outgrowth and

## Target Details

---

metastasis. Laminins are composed of 3 non identical chains: laminin alpha, beta and gamma (formerly A, B1, and B2, respectively) and they form a cruciform structure consisting of 3 short arms, each formed by a different chain, and a long arm composed of all 3 chains. Each laminin chain is a multidomain protein encoded by a distinct gene. Several isoforms of each chain have been described. Different alpha, beta and gamma chain isomers combine to give rise to different heterotrimeric laminin isoforms which are designated by Arabic numerals in the order of their discovery, i.e. alpha1beta1gamma1 heterotrimer is laminin 1. The biological functions of the different chains and trimer molecules are largely unknown, but some of the chains have been shown to differ with respect to their tissue distribution, presumably reflecting diverse functions in vivo. This gene encodes the beta chain isoform laminin, beta 1. The beta 1 chain has 7 structurally distinct domains which it shares with other beta chain isomers. The C-terminal helical region containing domains I and II are separated by domain alpha, domains III and V contain several EGF-like repeats, and domains IV and VI have a globular conformation. Laminin, beta 1 is expressed in most tissues that produce basement membranes, and is one of the 3 chains constituting laminin 1, the first laminin isolated from Engelbreth-Holm-Swarm (EHS) tumor. A sequence in the beta 1 chain that is involved in cell attachment, chemotaxis, and binding to the laminin receptor was identified and shown to have the capacity to inhibit metastasis.

---

Molecular Weight: 198038

---

Gene ID: 3912

---

NCBI Accession: [NP\\_002282](#)

---

UniProt: [P07942](#)

## Application Details

---

Application Notes: WB: 1:1000. IHC-P: 1:10~50

---

Restrictions: For Research Use only

## Handling

---

Format: Liquid

---

Buffer: Purified polyclonal antibody supplied in PBS with 0.09 % (W/V) sodium azide.

---

Preservative: Sodium azide

---

Precaution of Use: This product contains Sodium azide: a POISONOUS AND HAZARDOUS SUBSTANCE which

---

## Handling

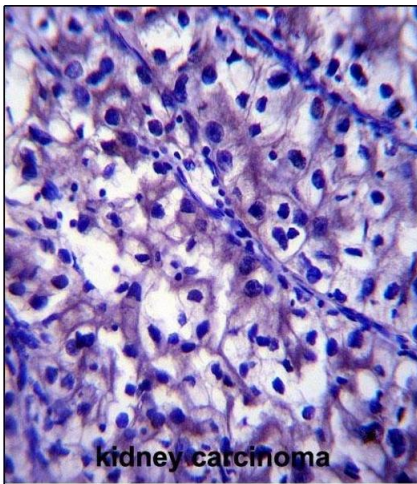
should be handled by trained staff only.

Storage: 4 °C,-20 °C

Storage Comment: LAMB1 Antibody (C-term) can be refrigerated at 2-8 °C for up to 6 months. For long term storage, place the at -20 °C.

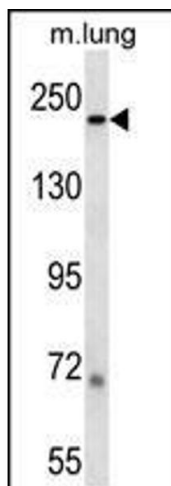
Expiry Date: 6 months

## Images



### Immunohistochemistry (Paraffin-embedded Sections)

**Image 1.** LB1 Antibody (C-term) (ABIN657904 and ABIN2846855) immunohistochemistry analysis in formalin fixed and paraffin embedded human kidney carcinoma followed by peroxidase conjugation of the secondary antibody and DAB staining. This data demonstrates the use of LB1 Antibody (C-term) for immunohistochemistry. Clinical relevance has not been evaluated.



### Western Blotting

**Image 2.** LB1 Antibody (C-term) (ABIN657904 and ABIN2846855) western blot analysis in mouse lung tissue lysates (35 µg/lane). This demonstrates the LB1 antibody detected the LB1 protein (arrow).