

Datasheet for ABIN657905  
**anti-LAMC2 antibody (AA 941-970)**[Go to Product page](#)

## 1 Image

## Overview

Quantity:	400 µL
Target:	LAMC2
Binding Specificity:	AA 941-970
Reactivity:	Mouse
Host:	Rabbit
Clonality:	Polyclonal
Conjugate:	This LAMC2 antibody is un-conjugated
Application:	Western Blotting (WB)

## Product Details

Immunogen:	This LAMC2 antibody is generated from rabbits immunized with a KLH conjugated synthetic peptide between 941-970 amino acids from the Central region of human LAMC2.
Clone:	RB33614
Isotype:	Ig Fraction
Purification:	This antibody is purified through a protein A column, followed by peptide affinity purification.

## Target Details

Target:	LAMC2
Alternative Name:	LAMC2 ( <a href="#">LAMC2 Products</a> )
Background:	Laminins, a family of extracellular matrix glycoproteins, are the major noncollagenous

constituent of basement membranes. They have been implicated in a wide variety of biological processes including cell adhesion, differentiation, migration, signaling, neurite outgrowth and metastasis. Laminins are composed of 3 non identical chains: laminin alpha, beta and gamma (formerly A, B1, and B2, respectively) and they form a cruciform structure consisting of 3 short arms, each formed by a different chain, and a long arm composed of all 3 chains. Each laminin chain is a multidomain protein encoded by a distinct gene. Several isoforms of each chain have been described. Different alpha, beta and gamma chain isomers combine to give rise to different heterotrimeric laminin isoforms which are designated by Arabic numerals in the order of their discovery, i.e. alpha1beta1gamma1 heterotrimer is laminin 1. The biological functions of the different chains and trimer molecules are largely unknown, but some of the chains have been shown to differ with respect to their tissue distribution, presumably reflecting diverse functions in vivo. This gene encodes the gamma chain isoform laminin, gamma 2. The gamma 2 chain, formerly thought to be a truncated version of beta chain (B2t), is highly homologous to the gamma 1 chain, however, it lacks domain VI, and domains V, IV and III are shorter. It is expressed in several fetal tissues but differently from gamma 1, and is specifically localized to epithelial cells in skin, lung and kidney. The gamma 2 chain together with alpha 3 and beta 3 chains constitute laminin 5 (earlier known as kalinin), which is an integral part of the anchoring filaments that connect epithelial cells to the underlying basement membrane. The epithelium-specific expression of the gamma 2 chain implied its role as an epithelium attachment molecule, and mutations in this gene have been associated with junctional epidermolysis bullosa, a skin disease characterized by blisters due to disruption of the epidermal-dermal junction. Two transcript variants resulting from alternative splicing of the 3' terminal exon, and encoding different isoforms of gamma 2 chain, have been described. The two variants are differentially expressed in embryonic tissues, however, the biological significance of the two forms is not known. Transcript variants utilizing alternative polyA\_signal have also been noted in literature.

---

Molecular Weight:	130976
-------------------	--------

---

Gene ID:	3918
----------	------

---

NCBI Accession:	<a href="#">NP_005553</a> , <a href="#">NP_061486</a>
-----------------	---

---

UniProt:	<a href="#">Q13753</a>
----------	------------------------

## Application Details

---

Application Notes:	WB: 1:1000
--------------------	------------

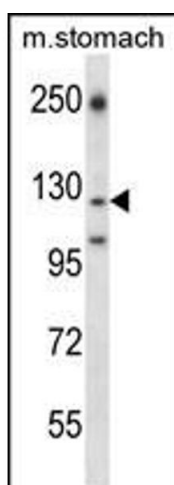
---

Restrictions:	For Research Use only
---------------	-----------------------

## Handling

Format:	Liquid
Buffer:	Purified polyclonal antibody supplied in PBS with 0.09 % (W/V) sodium azide.
Preservative:	Sodium azide
Precaution of Use:	This product contains Sodium azide: a POISONOUS AND HAZARDOUS SUBSTANCE which should be handled by trained staff only.
Storage:	4 °C,-20 °C
Storage Comment:	LAMC2 Antibody (Center) can be refrigerated at 2-8 °C for up to 6 months. For long term storage, place the at -20 °C.
Expiry Date:	6 months

## Images



### Western Blotting

**Image 1.** LC2 Antibody (Center) (ABIN657905 and ABIN2846856) western blot analysis in mouse stomach tissue lysates (35 µg/lane). This demonstrates the LC2 antibody detected the LC2 protein (arrow).