

Datasheet for ABIN6579167  
**anti-L3MBTL1 antibody (AA 1-215)**[Go to Product page](#)[1 Image](#)[2 Publications](#)

## Overview

Quantity:	100 µL
Target:	L3MBTL1
Binding Specificity:	AA 1-215
Reactivity:	Human
Host:	Rabbit
Clonality:	Polyclonal
Conjugate:	This L3MBTL1 antibody is un-conjugated
Application:	Western Blotting (WB)

## Product Details

Immunogen:	This L3MBTL1 antibody was raised against a His-tagged fusion protein corresponding to amino acids 1-215 of human L3MBTL1.
Purification:	None

## Target Details

Target:	L3MBTL1
Alternative Name:	L3MBTL1 ( <a href="#">L3MBTL1 Products</a> )
Molecular Weight:	100 kDa
Gene ID:	26013
Pathways:	<a href="#">Chromatin Binding</a>

## Application Details

Application Notes:	Optimal working dilution should be determined by the investigator.
--------------------	--

Restrictions:	For Research Use only
---------------	-----------------------

## Handling

Format:	Liquid
---------	--------

Preservative:	Sodium azide
---------------	--------------

Precaution of Use:	This product contains Sodium azide: a POISONOUS AND HAZARDOUS SUBSTANCE which should be handled by trained staff only.
--------------------	--

Handling Advice:	Avoid repeated freeze/thaw cycles and keep on ice when not in storage.
------------------	--

Storage:	-20 °C
----------	--------

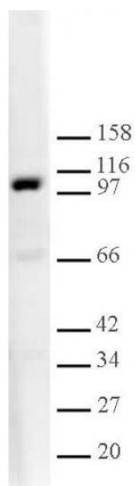
Storage Comment:	Antibodies in solution can be stored at -20 °C for 2 years.
------------------	---

Expiry Date:	6 months
--------------	----------

## Publications

Product cited in:	Tedder, Engel: "CD20: a regulator of cell-cycle progression of B lymphocytes." in: <b>Immunology today</b> , Vol. 15, Issue 9, pp. 450-4, (1994) ( <a href="#">PubMed</a> ).
-------------------	--

Hultin, Hausner, Hultin, Giorgi: "CD20 (pan-B cell) antigen is expressed at a low level on a subpopulation of human T lymphocytes." in: **Cytometry**, Vol. 14, Issue 2, pp. 196-204, (1993) ([PubMed](#)).



#### Western Blotting

**Image 1.** L3MBTL1 antibody tested by Western blot. Nuclear extract of HeLa cells (20 µg) was probed with L3MBTL1 antibody (1:2,000 dilution).