

Datasheet for ABIN6579170
anti-JMJD2D antibody (AA 337-359)



[Go to Product page](#)

1 Image

Overview

Quantity:	100 µL
Target:	JMJD2D (KDM4D)
Binding Specificity:	AA 337-359
Reactivity:	Human
Host:	Rabbit
Clonality:	Polyclonal
Conjugate:	This JMJD2D antibody is un-conjugated
Application:	Western Blotting (WB)

Product Details

Immunogen:	This JMJD2D antibody was raised against a peptide corresponding to amino acids 337-359 of human JMJD2D.
Isotype:	IgG
Purification:	Affinity Purified

Target Details

Target:	JMJD2D (KDM4D)
Alternative Name:	JMJD2D (KDM4D Products)
Molecular Weight:	58 kDa
Gene ID:	55693

Target Details

Pathways: Warburg Effect

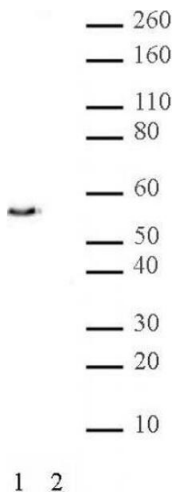
Application Details

Application Notes:	Optimal working dilution should be determined by the investigator.
Restrictions:	For Research Use only

Handling

Format:	Liquid
Preservative:	Sodium azide
Precaution of Use:	This product contains Sodium azide: a POISONOUS AND HAZARDOUS SUBSTANCE which should be handled by trained staff only.
Handling Advice:	Avoid repeated freeze/thaw cycles and keep on ice when not in storage.
Storage:	-20 °C
Storage Comment:	Antibodies in solution can be stored at -20 °C for 2 years.
Expiry Date:	6 months

Images



Western Blotting

Image 1. JMJD2D pAb tested by Western blot. Nuclear extract of HeLa cells (20 µg) probed with JMJD2D pAb (1:1,000). Specificity was verified by peptide competition. Lane 1: No peptide. Lane 2: 1 µM immunizing peptide.