

Datasheet for ABIN657925
anti-RFX5 antibody (AA 237-266)[Go to Product page](#)

1 Image

Overview

Quantity:	400 µL
Target:	RFX5
Binding Specificity:	AA 237-266
Reactivity:	Human
Host:	Rabbit
Clonality:	Polyclonal
Application:	Western Blotting (WB)

Product Details

Immunogen:	This RFX5 antibody is generated from rabbits immunized with a KLH conjugated synthetic peptide between 237-266 amino acids from the Central region of human RFX5.
Clone:	RB33870
Isotype:	Ig Fraction
Purification:	This antibody is purified through a protein A column, followed by peptide affinity purification.

Target Details

Target:	RFX5
Alternative Name:	RFX5 (RFX5 Products)
Background:	A lack of MHC-II expression results in a severe immunodeficiency syndrome called MHC-II deficiency, or the bare lymphocyte syndrome (BLS, MIM 209920). At least 4 complementation groups have been identified in B-cell lines established from patients with BLS. The molecular

Target Details

defects in complementation groups B, C, and D all lead to a deficiency in RFX, a nuclear protein complex that binds to the X box of MHC-II promoters. The lack of RFX binding activity in complementation group C results from mutations in the RFX5 gene encoding the 75-kD subunit of RFX (Steimle et al., 1995). RFX5 is the fifth member of the growing family of DNA-binding proteins sharing a novel and highly characteristic DNA-binding domain called the RFX motif. Multiple alternatively spliced transcript variants have been found but the full-length natures of only two have been determined. [provided by RefSeq].

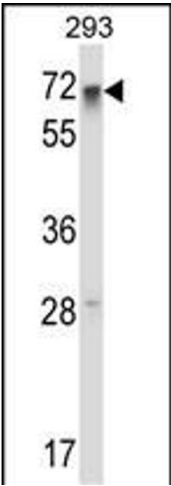
Molecular Weight:	65323
Gene ID:	5993
NCBI Accession:	NP_000440 , NP_001020774
UniProt:	P48382

Application Details

Application Notes:	WB: 1:1000
Restrictions:	For Research Use only

Handling

Format:	Liquid
Buffer:	Purified polyclonal antibody supplied in PBS with 0.09 % (W/V) sodium azide.
Preservative:	Sodium azide
Precaution of Use:	This product contains Sodium azide: a POISONOUS AND HAZARDOUS SUBSTANCE which should be handled by trained staff only.
Storage:	4 °C, -20 °C
Storage Comment:	RFX5 Antibody (Center) can be refrigerated at 2-8 °C for up to 6 months. For long term storage, place the at -20 °C.
Expiry Date:	6 months



Western Blotting

Image 1. RFX5 Antibody (Center) (ABIN657925 and ABIN2846872) western blot analysis in 293 cell line lysates (35 µg/lane). This demonstrates the RFX5 antibody detected the RFX5 protein (arrow).