

Datasheet for ABIN657926  
**anti-CELA2A antibody (C-Term)**[Go to Product page](#)

1 Image

2 Publications

## Overview

Quantity:	400 µL
Target:	CELA2A
Binding Specificity:	AA 231-260, C-Term
Reactivity:	Human
Host:	Rabbit
Clonality:	Polyclonal
Application:	Western Blotting (WB)

## Product Details

Immunogen:	This CELA2A antibody is generated from rabbits immunized with a KLH conjugated synthetic peptide between 231-260 amino acids from the C-terminal region of human CELA2A.
Clone:	RB33880
Isotype:	Ig Fraction
Predicted Reactivity:	Pig
Purification:	This antibody is purified through a protein A column, followed by peptide affinity purification.

## Target Details

Target:	CELA2A
Alternative Name:	CELA2A ( <a href="#">CELA2A Products</a> )
Background:	Elastases form a subfamily of serine proteases that hydrolyze many proteins in addition to

## Target Details

elastin. Humans have six elastase genes which encode the structurally similar proteins elastase 1, 2, 2A, 2B, 3A, and 3B. Like most of the human elastases, elastase 2A is secreted from the pancreas as a zymogen. In other species, elastase 2A has been shown to preferentially cleave proteins after leucine, methionine, and phenylalanine residues.

Molecular Weight: 28888

Gene ID: 63036

NCBI Accession: [NP\\_254275](#)

UniProt: [P08217](#)

## Application Details

Application Notes: WB: 1:1000

Restrictions: For Research Use only

## Handling

Format: Liquid

Buffer: Purified polyclonal antibody supplied in PBS with 0.09 % (W/V) sodium azide.

Preservative: Sodium azide

Precaution of Use: This product contains Sodium azide: a POISONOUS AND HAZARDOUS SUBSTANCE which should be handled by trained staff only.

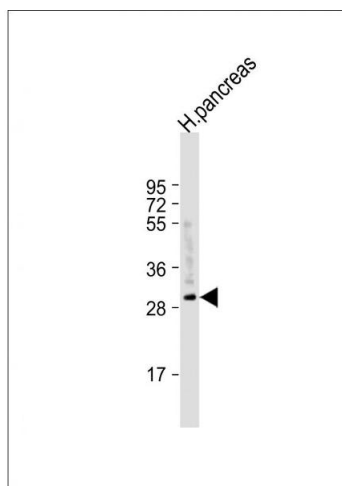
Storage: 4 °C, -20 °C

Storage Comment: CELA2A Antibody (C-term) can be refrigerated at 2-8 °C for up to 6 months. For long term storage, place the at -20 °C.

Expiry Date: 6 months

## Publications

Product cited in: Fallini, Bassell, Rossoll: "High-efficiency transfection of cultured primary motor neurons to study protein localization, trafficking, and function." in: **Molecular neurodegeneration**, Vol. 5, pp. 17, (2010) ([PubMed](#)).



### Western Blotting

**Image 1.** Anti-CELA2A Antibody (C-term) at 1:1000 dilution + human pancreas lysate Lysates/proteins at 20 µg per lane. Secondary Goat Anti-Rabbit IgG, (H+L), Peroxidase conjugated at 1/10000 dilution. Predicted band size : 29 kDa Blocking/Dilution buffer: 5 % NFDm/TBST.