



[Go to Product page](#)

Datasheet for ABIN657933

## anti-TLR8 antibody (AA 434-463)

### 2 Images

#### Overview

Quantity:	400 µL
Target:	TLR8
Binding Specificity:	AA 434-463
Reactivity:	Human
Host:	Rabbit
Clonality:	Polyclonal
Application:	Western Blotting (WB), Immunohistochemistry (Paraffin-embedded Sections) (IHC (p))

#### Product Details

Immunogen:	This TLR8 antibody is generated from rabbits immunized with a KLH conjugated synthetic peptide between 434-463 amino acids from the Central region of human TLR8.
Clone:	RB33953
Isotype:	Ig Fraction
Purification:	This antibody is purified through a protein A column, followed by peptide affinity purification.

#### Target Details

Target:	TLR8
Alternative Name:	TLR8 ( <a href="#">TLR8 Products</a> )
Background:	The protein encoded by this gene is a member of the Toll-like receptor (TLR) family which plays a fundamental role in pathogen recognition and activation of innate immunity. TLRs are highly conserved from Drosophila to humans and share structural and functional similarities. They

## Target Details

---

recognize pathogen-associated molecular patterns (PAMPs) that are expressed on infectious agents, and mediate the production of cytokines necessary for the development of effective immunity. The various TLRs exhibit different patterns of expression. This gene is predominantly expressed in lung and peripheral blood leukocytes, and lies in close proximity to another family member, TLR7, on chromosome X.

Molecular Weight:	119828
Gene ID:	51311
NCBI Accession:	<a href="#">NP_619542</a>
UniProt:	<a href="#">Q9NR97</a>
Pathways:	<a href="#">TLR Signaling</a> , <a href="#">Activation of Innate immune Response</a> , <a href="#">Toll-Like Receptors Cascades</a>

## Application Details

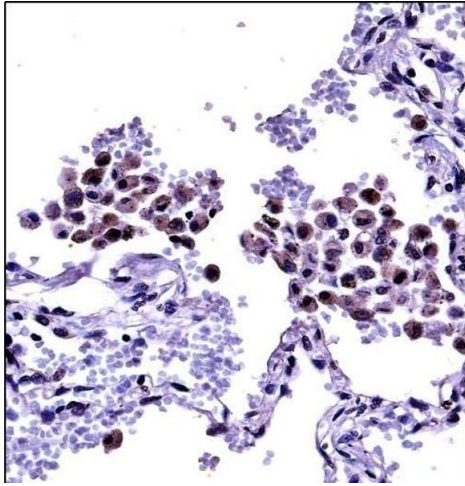
---

Application Notes:	WB: 1:1000. IHC-P: 1:10~50
Restrictions:	For Research Use only

## Handling

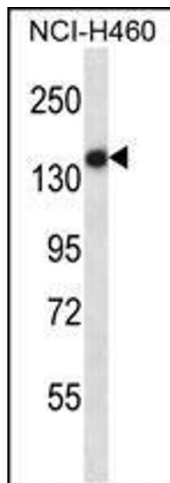
---

Format:	Liquid
Buffer:	Purified polyclonal antibody supplied in PBS with 0.09 % (W/V) sodium azide.
Preservative:	Sodium azide
Precaution of Use:	This product contains Sodium azide: a POISONOUS AND HAZARDOUS SUBSTANCE which should be handled by trained staff only.
Storage:	4 °C, -20 °C
Storage Comment:	TLR8 Antibody (Center) can be refrigerated at 2-8 °C for up to 6 months. For long term storage, place the at -20 °C.
Expiry Date:	6 months



### Immunohistochemistry (Paraffin-embedded Sections)

**Image 1.** TLR8 Antibody (Center) ((ABIN657933 and ABIN2846877))immunohistochemistry analysis in formalin fixed and paraffin embedded human lung tissue followed by peroxidase conjugation of the secondary antibody and DAB staining.This data demonstrates the use of TLR8 Antibody (Center) for immunohistochemistry. Clinical relevance has not been evaluated.



### Western Blotting

**Image 2.** TLR8 Antibody (Center) (ABIN657933 and ABIN2846877) western blot analysis in NCI- cell line lysates (35 µg/lane).This demonstrates the TLR8 antibody detected the TLR8 protein (arrow).