



[Go to Product page](#)

Datasheet for ABIN657937

anti-LRRC16B antibody (C-Term)

1 Image

Overview

Quantity:	400 µL
Target:	LRRC16B
Binding Specificity:	AA 1344-1372, C-Term
Reactivity:	Mouse
Host:	Rabbit
Clonality:	Polyclonal
Application:	Western Blotting (WB)

Product Details

Immunogen:	This LRRC16B antibody is generated from rabbits immunized with a KLH conjugated synthetic peptide between 1344-1372 amino acids from the C-terminal region of human LRRC16B.
Clone:	RB33996
Isotype:	Ig Fraction
Purification:	This antibody is purified through a protein A column, followed by peptide affinity purification.

Target Details

Target:	LRRC16B
Alternative Name:	LRRC16B (LRRC16B Products)
Background:	The exact function of this protein remains unknown.
Molecular Weight:	150230

Target Details

Gene ID: 90668

NCBI Accession: [NP_612369](#)

UniProt: [Q8ND23](#)

Application Details

Application Notes: WB: 1:1000

Restrictions: For Research Use only

Handling

Format: Liquid

Buffer: Purified polyclonal antibody supplied in PBS with 0.09 % (W/V) sodium azide.

Preservative: Sodium azide

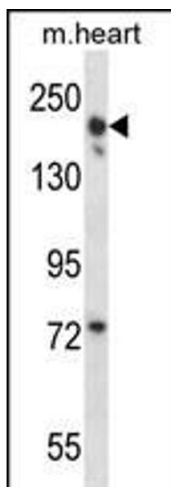
Precaution of Use: This product contains Sodium azide: a POISONOUS AND HAZARDOUS SUBSTANCE which should be handled by trained staff only.

Storage: 4 °C, -20 °C

Storage Comment: LRRC16B Antibody (C-term) can be refrigerated at 2-8 °C for up to 6 months. For long term storage, place the at -20 °C.

Expiry Date: 6 months

Images



Western Blotting

Image 1. LRRC16B Antibody (C-term) (ABIN657937 and ABIN2846881) western blot analysis in mouse heart tissue lysates (35 µg/lane). This demonstrates the LRRC16B antibody detected the LRRC16B protein (arrow).