

Datasheet for ABIN657944
anti-HES1 antibody (N-Term)



[Go to Product page](#)

1 Image

Overview

Quantity:	400 µL
Target:	HES1
Binding Specificity:	AA 3-32, N-Term
Reactivity:	Human
Host:	Rabbit
Clonality:	Polyclonal
Application:	Western Blotting (WB)

Product Details

Immunogen:	This HES1 antibody is generated from rabbits immunized with a KLH conjugated synthetic peptide between 3-32 amino acids from the N-terminal region of human HES1.
Clone:	RB34029
Isotype:	Ig Fraction
Predicted Reactivity:	B, M, Rat
Purification:	This antibody is purified through a protein A column, followed by peptide affinity purification.

Target Details

Target:	HES1
Alternative Name:	HES1 (HES1 Products)
Background:	This protein belongs to the basic helix-loop-helix family of transcription factors. It is a

Target Details

transcriptional repressor of genes that require a bHLH protein for their transcription. The protein has a particular type of basic domain that contains a helix interrupting protein that binds to the N-box rather than the canonical E-box.

Molecular Weight: 29541

Gene ID: 3280

NCBI Accession: [NP_005515](#)

UniProt: [Q14469](#)

Pathways: [DNA Damage Repair](#)

Application Details

Application Notes: WB: 1:1000

Restrictions: For Research Use only

Handling

Format: Liquid

Buffer: Purified polyclonal antibody supplied in PBS with 0.09 % (W/V) sodium azide.

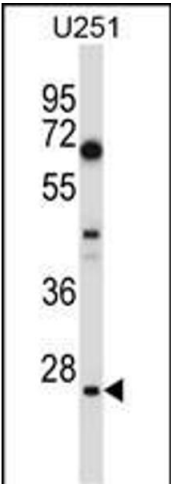
Preservative: Sodium azide

Precaution of Use: This product contains Sodium azide: a POISONOUS AND HAZARDOUS SUBSTANCE which should be handled by trained staff only.

Storage: 4 °C,-20 °C

Storage Comment: HES1 Antibody (N-term) can be refrigerated at 2-8 °C for up to 6 months. For long term storage, place the at -20 °C.

Expiry Date: 6 months



Western Blotting

Image 1. HES1 Antibody (N-term) (ABIN657944 and ABIN2846888) western blot analysis in cell line lysates (35 µg/lane). This demonstrates the HES1 antibody detected the HES1 protein (arrow).