

Datasheet for ABIN657948
anti-ODC1 antibody (C-Term)



[Go to Product page](#)

1 Image

Overview

Quantity:	400 µL
Target:	ODC1
Binding Specificity:	AA 323-352, C-Term
Reactivity:	Human
Host:	Rabbit
Clonality:	Polyclonal
Conjugate:	This ODC1 antibody is un-conjugated
Application:	Western Blotting (WB)

Product Details

Immunogen:	This ODC1 antibody is generated from rabbits immunized with a KLH conjugated synthetic peptide between 323-352 amino acids from the C-terminal region of human ODC1.
Clone:	RB34050
Isotype:	Ig Fraction
Predicted Reactivity:	B
Purification:	This antibody is purified through a protein A column, followed by peptide affinity purification.

Target Details

Target:	ODC1
Alternative Name:	ODC1 (ODC1 Products)

Target Details

Background: This gene encodes the rate-limiting enzyme of the polyamine biosynthesis pathway which catalyzes ornithine to putrescine. The activity level for the enzyme varies in response to growth-promoting stimuli and exhibits a high turnover rate in comparison to other mammalian proteins. Originally localized to both chromosomes 2 and 7, the gene encoding this enzyme has been determined to be located on 2p25, with a pseudogene located on 7q31-qter.

Molecular Weight: 51148

Gene ID: 4953

NCBI Accession: [NP_002530](#)

UniProt: [P11926](#)

Application Details

Application Notes: WB: 1:1000

Restrictions: For Research Use only

Handling

Format: Liquid

Buffer: Purified polyclonal antibody supplied in PBS with 0.09 % (W/V) sodium azide.

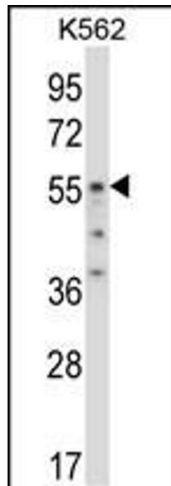
Preservative: Sodium azide

Precaution of Use: This product contains Sodium azide: a POISONOUS AND HAZARDOUS SUBSTANCE which should be handled by trained staff only.

Storage: 4 °C,-20 °C

Storage Comment: ODC1 Antibody (C-term) can be refrigerated at 2-8 °C for up to 6 months. For long term storage, place the at -20 °C.

Expiry Date: 6 months



Western Blotting

Image 1. ODC1 Antibody (C-term) (ABIN657948 and ABIN2846892) western blot analysis in K562 cell line lysates (35 µg/lane). This demonstrates the ODC1 antibody detected the ODC1 protein (arrow).