

Datasheet for ABIN657949
anti-Radixin antibody (C-Term)[Go to Product page](#)

1 Image

Overview

Quantity:	400 µL
Target:	Radixin (RDX)
Binding Specificity:	AA 466-495, C-Term
Reactivity:	Human
Host:	Rabbit
Clonality:	Polyclonal
Application:	Western Blotting (WB)

Product Details

Immunogen:	This RDX antibody is generated from rabbits immunized with a KLH conjugated synthetic peptide between 466-495 amino acids from the C-terminal region of human RDX.
Clone:	RB34052
Isotype:	Ig Fraction
Predicted Reactivity:	B, Pig
Purification:	This antibody is purified through a protein A column, followed by peptide affinity purification.

Target Details

Target:	Radixin (RDX)
Alternative Name:	RDX (RDX Products)
Background:	Radixin is a cytoskeletal protein that may be important in linking actin to the plasma

Target Details

membrane. It is highly similar in sequence to both ezrin and moesin. The radixin gene has been localized by fluorescence in situ hybridization to 11q23. A truncated version representing a pseudogene (RDXP2) was assigned to Xp21.3. Another pseudogene that seemed to lack introns (RDXP1) was mapped to 11p by Southern and PCR analyses.

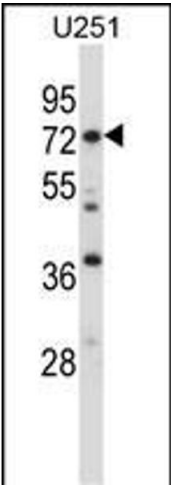
Molecular Weight:	68564
Gene ID:	5962
NCBI Accession:	NP_001247421 , NP_001247422 , NP_001247423 , NP_001247424 , NP_001247425 , NP_002897
UniProt:	P35241
Pathways:	Regulation of Actin Filament Polymerization , Asymmetric Protein Localization , SARS-CoV-2 Protein Interactome

Application Details

Application Notes:	WB: 1:1000
Restrictions:	For Research Use only

Handling

Format:	Liquid
Buffer:	Purified polyclonal antibody supplied in PBS with 0.09 % (W/V) sodium azide.
Preservative:	Sodium azide
Precaution of Use:	This product contains Sodium azide: a POISONOUS AND HAZARDOUS SUBSTANCE which should be handled by trained staff only.
Storage:	4 °C, -20 °C
Storage Comment:	RDX Antibody (C-term) can be refrigerated at 2-8 °C for up to 6 months. For long term storage, place the at -20 °C.
Expiry Date:	6 months



Western Blotting

Image 1. RDX Antibody (C-term) (ABIN657949 and ABIN2846893) western blot analysis in cell line lysates (35 µg/lane). This demonstrates the RDX antibody detected the RDX protein (arrow).