

Datasheet for ABIN657950

anti-Retinoblastoma Binding Protein 8 antibody (C-Term)[Go to Product page](#)**1** Image

Overview

Quantity:	400 µL
Target:	Retinoblastoma Binding Protein 8 (RBBP8)
Binding Specificity:	AA 763-792, C-Term
Reactivity:	Human
Host:	Rabbit
Clonality:	Polyclonal
Application:	Western Blotting (WB)

Product Details

Immunogen:	This RBBP8 antibody is generated from rabbits immunized with a KLH conjugated synthetic peptide between 763-792 amino acids from the C-terminal region of human RBBP8.
Clone:	RB34059
Isotype:	Ig Fraction
Purification:	This antibody is purified through a protein A column, followed by peptide affinity purification.

Target Details

Target:	Retinoblastoma Binding Protein 8 (RBBP8)
Alternative Name:	RBBP8 (RBBP8 Products)
Background:	<p>The protein encoded by this gene is a ubiquitously expressed nuclear protein. It is found among several proteins that bind directly to retinoblastoma protein, which regulates cell proliferation.</p> <p>This protein complexes with transcriptional co-repressor CTBP. It is also associated with</p>

Target Details

BRCA1 and is thought to modulate the functions of BRCA1 in transcriptional regulation, DNA repair, and/or cell cycle checkpoint control. It is suggested that this gene may itself be a tumor suppressor acting in the same pathway as BRCA1. Three transcript variants encoding two different isoforms have been found for this gene. More transcript variants exist, but their full-length natures have not been determined.

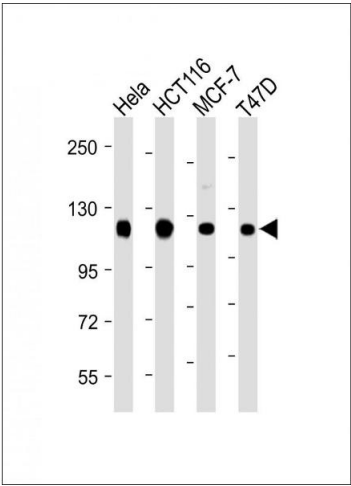
Molecular Weight:	101942
Gene ID:	5932
NCBI Accession:	NP_002885 , NP_976036 , NP_976037
UniProt:	Q99708
Pathways:	Cell Division Cycle , DNA Damage Repair

Application Details

Application Notes:	WB: 1:2000
Restrictions:	For Research Use only

Handling

Format:	Liquid
Buffer:	Purified polyclonal antibody supplied in PBS with 0.09 % (W/V) sodium azide.
Preservative:	Sodium azide
Precaution of Use:	This product contains Sodium azide: a POISONOUS AND HAZARDOUS SUBSTANCE which should be handled by trained staff only.
Storage:	4 °C, -20 °C
Storage Comment:	RBBP8 Antibody (C-term) can be refrigerated at 2-8 °C for up to 6 months. For long term storage, place the at -20 °C.
Expiry Date:	6 months



Western Blotting

Image 1. All lanes : Anti-RBBP8 Antibody (C-term) at 1:2000 dilution Lane 1: HeLa whole cell lysate Lane 2: HC whole cell lysate Lane 3: MCF-7 whole cell lysate Lane 4: T47D whole cell lysate Lysates/proteins at 20 µg per lane. Secondary Goat Anti-Rabbit IgG, (H+L), Peroxidase conjugated at 1/10000 dilution. Predicted band size : 102 kDa Blocking/Dilution buffer: 5 % NFDM/TBST.