

Datasheet for ABIN657955  
**anti-PPP2R5C antibody (C-Term)**[Go to Product page](#)

## 1 Image

## Overview

Quantity:	400 µL
Target:	PPP2R5C
Binding Specificity:	AA 465-494, C-Term
Reactivity:	Human
Host:	Rabbit
Clonality:	Polyclonal
Application:	Western Blotting (WB)

## Product Details

Immunogen:	This PPP2R5C antibody is generated from rabbits immunized with a KLH conjugated synthetic peptide between 465-494 amino acids from the C-terminal region of human PPP2R5C.
Clone:	RB34068
Isotype:	Ig Fraction
Purification:	This antibody is purified through a protein A column, followed by peptide affinity purification.

## Target Details

Target:	PPP2R5C
Alternative Name:	PPP2R5C ( <a href="#">PPP2R5C Products</a> )
Background:	The product of this gene belongs to the phosphatase 2A regulatory subunit B family. Protein phosphatase 2A is one of the four major Ser/Thr phosphatases, and it is implicated in the negative control of cell growth and division. It consists of a common heteromeric core enzyme,

## Target Details

which is composed of a catalytic subunit and a constant regulatory subunit, that associates with a variety of regulatory subunits. The B regulatory subunit might modulate substrate selectivity and catalytic activity. This gene encodes a gamma isoform of the regulatory subunit B56 subfamily. Alternatively spliced transcript variants encoding different isoforms have been identified.

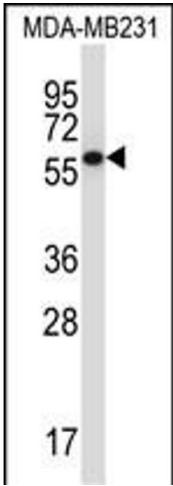
Molecular Weight:	61061
Gene ID:	5527
NCBI Accession:	<a href="#">NP_001155197</a> , <a href="#">NP_001155198</a> , <a href="#">NP_002710</a> , <a href="#">NP_848701</a> , <a href="#">NP_848702</a>
UniProt:	<a href="#">Q13362</a>
Pathways:	<a href="#">PI3K-Akt Signaling</a>

## Application Details

Application Notes:	WB: 1:1000
Restrictions:	For Research Use only

## Handling

Format:	Liquid
Buffer:	Purified polyclonal antibody supplied in PBS with 0.09 % (W/V) sodium azide.
Preservative:	Sodium azide
Precaution of Use:	This product contains Sodium azide: a POISONOUS AND HAZARDOUS SUBSTANCE which should be handled by trained staff only.
Storage:	4 °C, -20 °C
Storage Comment:	PPP2R5C Antibody (C-term) can be refrigerated at 2-8 °C for up to 6 months. For long term storage, place the at -20 °C.
Expiry Date:	6 months



Western Blotting

**Image 1.** P2R5C Antibody (C-term) (ABIN657955 and ABIN2846900) western blot analysis in MDA-M cell line lysates (35 µg/lane). This demonstrates the P2R5C antibody detected the P2R5C protein (arrow).