

Datasheet for ABIN657957
anti-CELF1 antibody (N-Term)[Go to Product page](#)

2 Images

Overview

Quantity:	400 µL
Target:	CELF1
Binding Specificity:	AA 1-30, N-Term
Reactivity:	Human
Host:	Rabbit
Clonality:	Polyclonal
Application:	Western Blotting (WB), Immunohistochemistry (Paraffin-embedded Sections) (IHC (p))

Product Details

Immunogen:	This CUGBP1 antibody is generated from rabbits immunized with a KLH conjugated synthetic peptide between 1-30 amino acids from the N-terminal region of human CUGBP1.
Clone:	RB34074
Isotype:	Ig Fraction
Predicted Reactivity:	C, M, Rat
Purification:	This antibody is purified through a protein A column, followed by peptide affinity purification.

Target Details

Target:	CELF1
Alternative Name:	CUGBP1 (CELF1 Products)
Background:	Members of the CELF/BRUNOL protein family contain two N-terminal RNA recognition motif

Target Details

(RRM) domains, one C-terminal RRM domain, and a divergent segment of 160-230 aa between the second and third RRM domains. Members of this protein family regulate pre-mRNA alternative splicing and may also be involved in mRNA editing, and translation. This gene may play a role in myotonic dystrophy type 1 (DM1) via interactions with the dystrophin myotonic-protein kinase (DMPK) gene. Alternative splicing results in multiple transcript variants encoding different isoforms.

Molecular Weight: 52063

Gene ID: 10658

NCBI Accession: [NP_001020767](#), [NP_001166110](#), [NP_001166111](#), [NP_006551](#), [NP_941989](#)

UniProt: [Q92879](#)

Pathways: [Ribonucleoprotein Complex Subunit Organization](#)

Application Details

Application Notes: WB: 1:1000. IHC-P: 1:10~50

Restrictions: For Research Use only

Handling

Format: Liquid

Buffer: Purified polyclonal antibody supplied in PBS with 0.09 % (W/V) sodium azide.

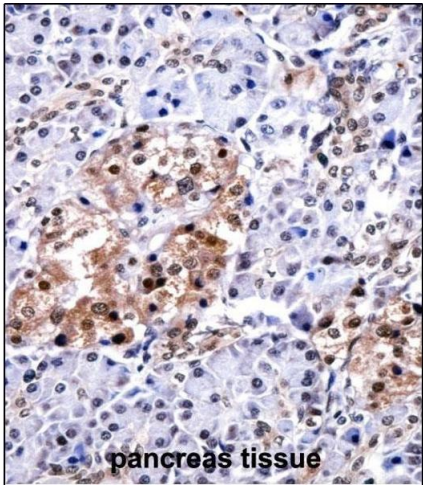
Preservative: Sodium azide

Precaution of Use: This product contains Sodium azide: a POISONOUS AND HAZARDOUS SUBSTANCE which should be handled by trained staff only.

Storage: 4 °C, -20 °C

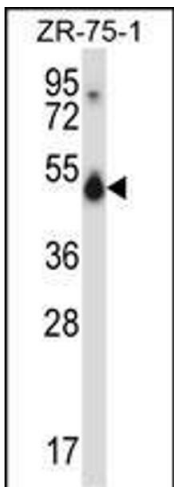
Storage Comment: CUGBP1 Antibody (N-term) can be refrigerated at 2-8 °C for up to 6 months. For long term storage, place the at -20 °C.

Expiry Date: 6 months



Immunohistochemistry (Paraffin-embedded Sections)

Image 1. CUGBP1 Antibody (N-term) ((ABIN657957 and ABIN2846902))immunohistochemistry analysis in formalin fixed and paraffin embedded human pancreas tissue followed by peroxidase conjugation of the secondary antibody and DAB staining.This data demonstrates the use of CUGBP1 Antibody (N-term) for immunohistochemistry. Clinical relevance has not been evaluated.



Western Blotting

Image 2. CUGBP1 Antibody (N-term) (ABIN657957 and ABIN2846902) western blot analysis in ZR-75-1 cell line lysates (35 µg/lane).This demonstrates the CUGBP1 antibody detected the CUGBP1 protein (arrow).