

Datasheet for ABIN657959
anti-HCLS1 antibody (C-Term)

3 Images

[Go to Product page](#)

Overview

Quantity:	400 µL
Target:	HCLS1
Binding Specificity:	AA 362-391, C-Term
Reactivity:	Human
Host:	Rabbit
Clonality:	Polyclonal
Application:	Western Blotting (WB), Immunohistochemistry (Paraffin-embedded Sections) (IHC (p))

Product Details

Immunogen:	This HCLS1 antibody is generated from rabbits immunized with a KLH conjugated synthetic peptide between 362-391 amino acids from the C-terminal region of human HCLS1.
Clone:	RB34076
Isotype:	Ig Fraction
Purification:	This antibody is purified through a protein A column, followed by peptide affinity purification.

Target Details

Target:	HCLS1
Alternative Name:	HCLS1 (HCLS1 Products)
Background:	Substrate of the antigen receptor-coupled tyrosine kinase. Plays a role in antigen receptor signaling for both clonal expansion and deletion in lymphoid cells. May also be involved in the regulation of gene expression.

Target Details

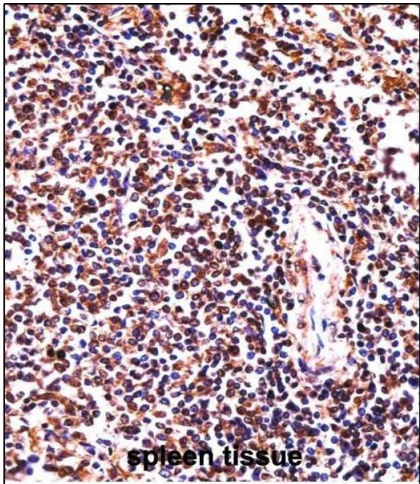
Molecular Weight:	54014
Gene ID:	3059
NCBI Accession:	NP_005326
UniProt:	P14317
Pathways:	Fc-epsilon Receptor Signaling Pathway , EGFR Signaling Pathway , Neurotrophin Signaling Pathway , Regulation of Actin Filament Polymerization , Myometrial Relaxation and Contraction , Maintenance of Protein Location

Application Details

Application Notes:	WB: 1:1000. WB: 1:1000. IHC-P: 1:10~50
Restrictions:	For Research Use only

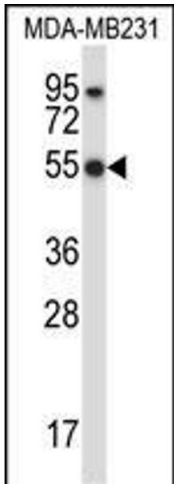
Handling

Format:	Liquid
Buffer:	Purified polyclonal antibody supplied in PBS with 0.09 % (W/V) sodium azide.
Preservative:	Sodium azide
Precaution of Use:	This product contains Sodium azide: a POISONOUS AND HAZARDOUS SUBSTANCE which should be handled by trained staff only.
Storage:	4 °C, -20 °C
Storage Comment:	HCLS1 Antibody (C-term) can be refrigerated at 2-8 °C for up to 6 months. For long term storage, place the at -20 °C.
Expiry Date:	6 months



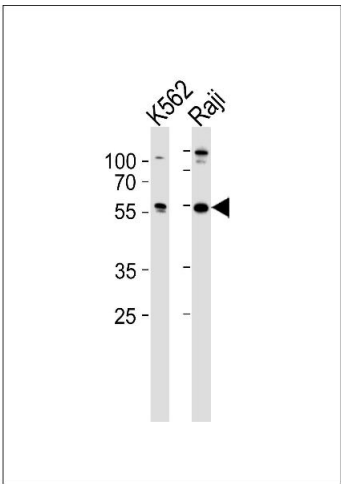
Immunohistochemistry (Paraffin-embedded Sections)

Image 1. HCLS1 Antibody (C-term) ((ABIN657959 and ABIN2846904))immunohistochemistry analysis in formalin fixed and paraffin embedded human spleen tissue followed by peroxidase conjugation of the secondary antibody and DAB staining.This data demonstrates the use of HCLS1 Antibody (C-term) for immunohistochemistry. Clinical relevance has not been evaluated.



Western Blotting

Image 2. HCLS1 Antibody (C-term) (ABIN657959 and ABIN2846904) western blot analysis in MDA-M cell line lysates (35 µg/lane).This demonstrates the HCLS1 antibody detected the HCLS1 protein (arrow).



Western Blotting

Image 3. Western blot analysis of lysates from K562, Raji cell line (from left to right), using HCLS1 Antibody (C-term) (ABIN657959 and ABIN2846904). (ABIN657959 and ABIN2846904) was diluted at 1:1000 at each lane. A goat anti-rabbit IgG H&L(HRP) at 1:5000 dilution was used as the secondary antibody. Lysates at 35 µg per lane.