



[Go to Product page](#)

Datasheet for ABIN657963  
**anti-STAM2 antibody (AA 143-172)**

1 Image

### Overview

Quantity:	400 µL
Target:	STAM2
Binding Specificity:	AA 143-172
Reactivity:	Human
Host:	Rabbit
Clonality:	Polyclonal
Application:	Western Blotting (WB)

### Product Details

Immunogen:	This STAM2 antibody is generated from rabbits immunized with a KLH conjugated synthetic peptide between 143-172 amino acids from the Central region of human STAM2.
Clone:	RB34085
Isotype:	Ig Fraction
Purification:	This antibody is purified through a protein A column, followed by peptide affinity purification.

### Target Details

Target:	STAM2
Alternative Name:	STAM2 ( <a href="#">STAM2 Products</a> )
Background:	The protein encoded by this gene is closely related to STAM, an adaptor protein involved in the downstream signaling of cytokine receptors, both of which contain a SH3 domain and the immunoreceptor tyrosine-based activation motif (ITAM). Similar to STAM, this protein acts

## Target Details

---

downstream of JAK kinases, and is phosphorylated in response to cytokine stimulation. This protein and STAM thus are thought to exhibit compensatory effects on the signaling pathway downstream of JAK kinases upon cytokine stimulation.

Molecular Weight: 58164

Gene ID: 10254

NCBI Accession: [NP\\_005834](#)

UniProt: [O75886](#)

Pathways: [EGFR Signaling Pathway](#), [EGFR Downregulation](#)

## Application Details

---

Application Notes: WB: 1:1000

Restrictions: For Research Use only

## Handling

---

Format: Liquid

Buffer: Purified polyclonal antibody supplied in PBS with 0.09 % (W/V) sodium azide.

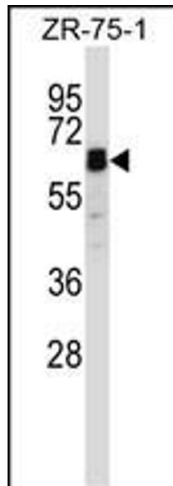
Preservative: Sodium azide

Precaution of Use: This product contains Sodium azide: a POISONOUS AND HAZARDOUS SUBSTANCE which should be handled by trained staff only.

Storage: 4 °C, -20 °C

Storage Comment: STAM2 Antibody (Center) can be refrigerated at 2-8 °C for up to 6 months. For long term storage, place the at -20 °C.

Expiry Date: 6 months



### Western Blotting

**Image 1.** ST Antibody (Center) (ABIN657963 and ABIN2846909) western blot analysis in ZR-75-1 cell line lysates (35 µg/lane). This demonstrates the ST antibody detected the ST protein (arrow).