

Datasheet for ABIN657967  
**anti-DLX4 antibody (AA 72-100)**[Go to Product page](#)

## 2 Images

## Overview

Quantity:	400 µL
Target:	DLX4
Binding Specificity:	AA 72-100
Reactivity:	Human
Host:	Rabbit
Clonality:	Polyclonal
Conjugate:	This DLX4 antibody is un-conjugated
Application:	Western Blotting (WB)

## Product Details

Immunogen:	This DLX4 antibody is generated from rabbits immunized with a KLH conjugated synthetic peptide between 72-100 amino acids from the Central region of human DLX4.
Clone:	RB34099
Isotype:	Ig Fraction
Purification:	This antibody is purified through a protein A column, followed by peptide affinity purification.

## Target Details

Target:	DLX4
Alternative Name:	DLX4 ( <a href="#">DLX4 Products</a> )
Background:	Many vertebrate homeo box-containing genes have been identified on the basis of their

## Target Details

sequence similarity with Drosophila developmental genes. Members of the Dlx gene family contain a homeobox that is related to that of Distal-less (Dll), a gene expressed in the head and limbs of the developing fruit fly. The Distal-less (Dlx) family of genes comprises at least 6 different members, DLX1-DLX6. The DLX proteins are postulated to play a role in forebrain and craniofacial development. Three transcript variants have been described for this gene, however, the full length nature of one variant has not been described. Studies of the two splice variants revealed that one encoded isoform functions as a repressor of the beta-globin gene while the other isoform lacks that function.

Molecular Weight: 26263

Gene ID: 1748

NCBI Accession: [NP\\_001925](#), [NP\\_612138](#)

UniProt: [Q92988](#)

## Application Details

Application Notes: WB: 1:1000. WB: 1:1000

Restrictions: For Research Use only

## Handling

Format: Liquid

Buffer: Purified polyclonal antibody supplied in PBS with 0.09 % (W/V) sodium azide.

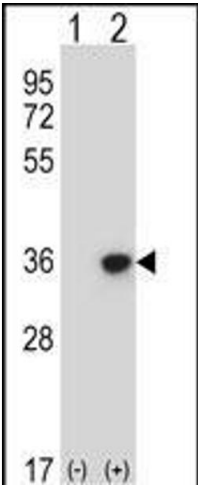
Preservative: Sodium azide

Precaution of Use: This product contains Sodium azide: a POISONOUS AND HAZARDOUS SUBSTANCE which should be handled by trained staff only.

Storage: 4 °C,-20 °C

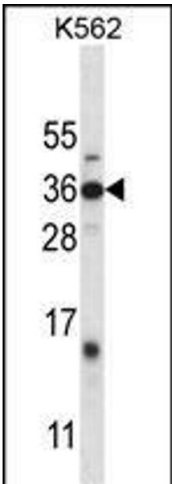
Storage Comment: DLX4 Antibody (Center) can be refrigerated at 2-8 °C for up to 6 months. For long term storage, place the at -20 °C.

Expiry Date: 6 months



#### Western Blotting

**Image 1.** Western blot analysis of DLX4 (arrow) using rabbit polyclonal DLX4 Antibody (Center) (ABIN657967 and ABIN2846913). 293 cell lysates (2 µg/lane) either nontransfected (Lane 1) or transiently transfected (Lane 2) with the DLX4 gene.



#### Western Blotting

**Image 2.** DLX4 Antibody (Center) (ABIN657967 and ABIN2846913) western blot analysis in K562 cell line lysates (35 µg/lane). This demonstrates the DLX4 antibody detected the DLX4 protein (arrow).