

Datasheet for ABIN657977  
**anti-CSTF3 antibody (C-Term)**[Go to Product page](#)

## 1 Image

## Overview

Quantity:	400 µL
Target:	CSTF3
Binding Specificity:	AA 556-585, C-Term
Reactivity:	Human
Host:	Rabbit
Clonality:	Polyclonal
Application:	Western Blotting (WB)

## Product Details

Immunogen:	This CSTF3 antibody is generated from rabbits immunized with a KLH conjugated synthetic peptide between 556-585 amino acids from the C-terminal region of human CSTF3.
Clone:	RB34138
Isotype:	Ig Fraction
Predicted Reactivity:	M
Purification:	This antibody is purified through a protein A column, followed by peptide affinity purification.

## Target Details

Target:	CSTF3
Alternative Name:	CSTF3 ( <a href="#">CSTF3 Products</a> )
Background:	The protein encoded by this gene is one of three (including CSTF1 and CSTF2) cleavage

## Target Details

stimulation factors that combine to form the cleavage stimulation factor complex (CSTF). This complex is involved in the polyadenylation and 3' end cleavage of pre-mRNAs. The encoded protein functions as a homodimer and interacts directly with both CSTF1 and CSTF2 in the CSTF complex. Alternative splicing results in multiple transcript variants encoding different isoforms.

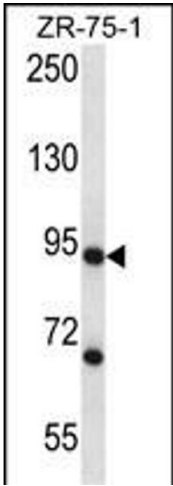
Molecular Weight:	82922
Gene ID:	1479
NCBI Accession:	<a href="#">NP_001028677</a> , <a href="#">NP_001028678</a> , <a href="#">NP_001317</a>
UniProt:	<a href="#">Q12996</a>

## Application Details

Application Notes:	WB: 1:1000
Restrictions:	For Research Use only

## Handling

Format:	Liquid
Buffer:	Purified polyclonal antibody supplied in PBS with 0.09 % (W/V) sodium azide.
Preservative:	Sodium azide
Precaution of Use:	This product contains Sodium azide: a POISONOUS AND HAZARDOUS SUBSTANCE which should be handled by trained staff only.
Storage:	4 °C,-20 °C
Storage Comment:	CSTF3 Antibody (C-term) can be refrigerated at 2-8 °C for up to 6 months. For long term storage, place the at -20 °C.
Expiry Date:	6 months



Western Blotting

**Image 1.** CSTF3 Antibody (C-term) (ABIN657977 and ABIN2846923) western blot analysis in ZR-75-1 cell line lysates (35 µg/lane). This demonstrates the CSTF3 antibody detected the CSTF3 protein (arrow).