



Datasheet for ABIN6579821
anti-IL2RG antibody



[Go to Product page](#)

2 Images

Overview

Quantity:	0.1 mg
Target:	IL2RG
Reactivity:	Human, Dog
Host:	Rat
Clonality:	Monoclonal
Conjugate:	This IL2RG antibody is un-conjugated
Application:	Flow Cytometry (FACS)

Product Details

Immunogen:	Human CD132-transfected cell line
Clone:	TUGh4
Isotype:	IgG2b kappa
Specificity:	The rat monoclonal antibody TUGh4 recognizes an extracellular epitope of CD132 (the common gamma chain), a 65-70 kDa type I transmembrane glycoprotein broadly expressed by most leukocytes.
Cross-Reactivity (Details):	Human, Canine (Dog)
Purification:	Purified by protein-G affinity chromatography.
Purity:	> 95 % (by SDS-PAGE)

Target Details

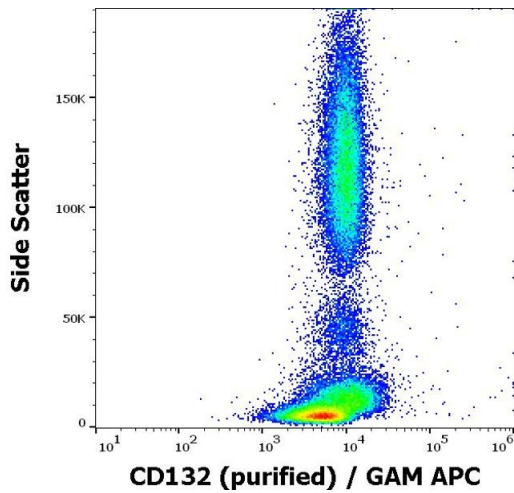
Target:	IL2RG
Alternative Name:	CD132 (IL2RG Products)
Background:	Interleukin 2 receptor subunit gamma,CD132 / common gamma chain is an essential component of receptors for IL-2, IL-4, IL-7, IL-9, IL-15, and IL-21, and it is critical for development of the immune system. Its mutation causes X-linked severe combined immunodeficiency disease (XSCID). CD132 is expressed on lymphocytes, NK cells, monocytes, and granulocytes. Through its cytoplasmic part which contains four tyrosines and an SH2 domain, CD132 transduces signal to downstream JAK/STAT pathway.,common gamma chain, IL2RG, SCIDX, IMD4
Gene ID:	3561
UniProt:	P31785
Pathways:	JAK-STAT Signaling , Growth Factor Binding

Application Details

Application Notes:	Flow cytometry: Recommended dilution: 1-4 µg/mL.
Restrictions:	For Research Use only

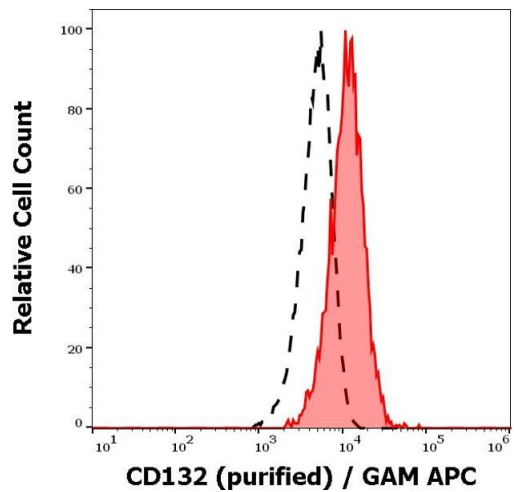
Handling

Concentration:	1 mg/mL
Buffer:	Phosphate buffered saline (PBS), pH 7.4, 15 mM sodium azide
Preservative:	Sodium azide
Precaution of Use:	This product contains Sodium azide: a POISONOUS AND HAZARDOUS SUBSTANCE which should be handled by trained staff only.
Storage:	4 °C
Storage Comment:	Store at 2-8°C. Do not freeze.



Flow Cytometry

Image 1. Flow cytometry surface staining pattern of human peripheral blood stained using anti-human CD132 (TUGh4) purified antibody (concentration in sample 4 µg/mL) GAM APC.



Flow Cytometry

Image 2. Separation of human lymphocytes (red-filled) from human CD132 negative blood debris (black-dashed) in flow cytometry analysis (surface staining) of human peripheral whole blood stained using anti-human CD132 (TUGh4) purified antibody (concentration in sample 4 µg/mL) GAM APC.