

Datasheet for ABIN657983
anti-SEC22B antibody (AA 75-104)[Go to Product page](#)

2 Images

Overview

Quantity:	400 µL
Target:	SEC22B
Binding Specificity:	AA 75-104
Reactivity:	Human
Host:	Rabbit
Clonality:	Polyclonal
Application:	Western Blotting (WB), Immunohistochemistry (Paraffin-embedded Sections) (IHC (p))

Product Details

Immunogen:	This SEC22B antibody is generated from rabbits immunized with a KLH conjugated synthetic peptide between 75-104 amino acids from the Central region of human SEC22B.
Clone:	RB34149
Isotype:	Ig Fraction
Predicted Reactivity:	Ha, M, Rat
Purification:	This antibody is purified through a protein A column, followed by peptide affinity purification.

Target Details

Target:	SEC22B
Alternative Name:	SEC22B (SEC22B Products)
Background:	The protein encoded by this gene is a member of the SEC22 family of vesicle trafficking

Target Details

proteins. It seems to complex with SNARE and it is thought to play a role in the ER-Golgi protein trafficking. This protein has strong similarity to *Mus musculus* and *Cricetulus griseus* proteins.

Molecular Weight: 24593

Gene ID: 9554

NCBI Accession: [NP_004883](#)

UniProt: [O75396](#)

Application Details

Application Notes: WB: 1:1000. IHC-P: 1:10~50

Restrictions: For Research Use only

Handling

Format: Liquid

Buffer: Purified polyclonal antibody supplied in PBS with 0.09 % (W/V) sodium azide.

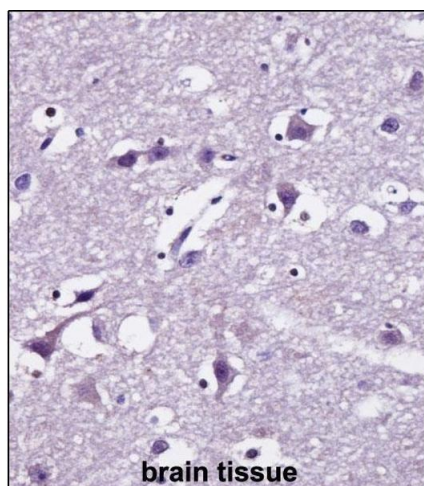
Preservative: Sodium azide

Precaution of Use: This product contains Sodium azide: a POISONOUS AND HAZARDOUS SUBSTANCE which should be handled by trained staff only.

Storage: 4 °C, -20 °C

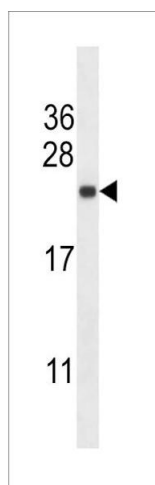
Storage Comment: SEC22B Antibody (Center) can be refrigerated at 2-8 °C for up to 6 months. For long term storage, place the at -20 °C.

Expiry Date: 6 months



Immunohistochemistry (Paraffin-embedded Sections)

Image 1. SEC22B Antibody (Center) ((ABIN657983 and ABIN2846930))immunohistochemistry analysis in formalin fixed and paraffin embedded human brain tissue followed by peroxidase conjugation of the secondary antibody and DAB staining.This data demonstrates the use of SEC22B Antibody (Center) for immunohistochemistry. Clinical relevance has not been evaluated.



Western Blotting

Image 2. SEC22B Antibody (Center) (ABIN657983 and ABIN2846930) western blot analysis in Hela cell line lysates (35 µg/lane).This demonstrates the SEC22B antibody detected the SEC22B protein (arrow).