

Datasheet for ABIN657989

anti-CSRP2 antibody (AA 68-96)**3** Images[Go to Product page](#)

Overview

Quantity:	400 µL
Target:	CSRP2
Binding Specificity:	AA 68-96
Reactivity:	Human
Host:	Rabbit
Clonality:	Polyclonal
Application:	Western Blotting (WB), Immunohistochemistry (Paraffin-embedded Sections) (IHC (p))

Product Details

Immunogen:	This CSRP2 antibody is generated from rabbits immunized with a KLH conjugated synthetic peptide between 68-96 amino acids from the Central region of human CSRP2.
Clone:	RB34161
Isotype:	Ig Fraction
Predicted Reactivity:	B
Purification:	This antibody is purified through a protein A column, followed by peptide affinity purification.

Target Details

Target:	CSRP2
Alternative Name:	CSRP2 (CSRP2 Products)
Background:	CSRP2 is a member of the CSRP family of genes, encoding a group of LIM domain proteins,

Target Details

which may be involved in regulatory processes important for development and cellular differentiation. CRP2 contains two copies of the cysteine-rich amino acid sequence motif (LIM) with putative zinc-binding activity, and may be involved in regulating ordered cell growth. Other genes in the family include CSRP1 and CSRP3.

Gene ID: 1466

NCBI Accession: [NP_001312](#)

UniProt: [Q16527](#)

Application Details

Application Notes: WB: 1:1000. WB: 1:1000. IHC-P: 1:10~50

Restrictions: For Research Use only

Handling

Format: Liquid

Buffer: Purified polyclonal antibody supplied in PBS with 0.09 % (W/V) sodium azide.

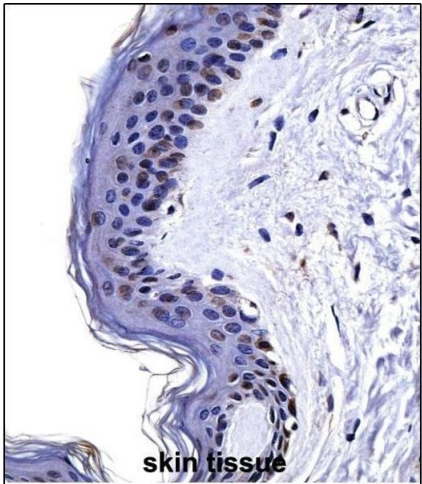
Preservative: Sodium azide

Precaution of Use: This product contains Sodium azide: a POISONOUS AND HAZARDOUS SUBSTANCE which should be handled by trained staff only.

Storage: 4 °C, -20 °C

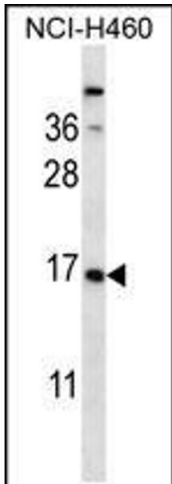
Storage Comment: CSRP2 Antibody (Center) can be refrigerated at 2-8 °C for up to 6 months. For long term storage, place the at -20 °C.

Expiry Date: 6 months



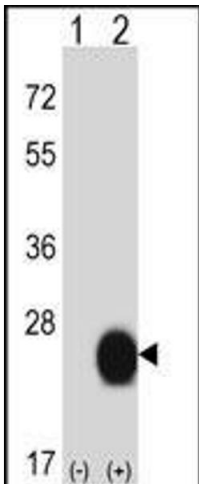
Immunohistochemistry (Paraffin-embedded Sections)

Image 1. CSRP2 Antibody (Center) ((ABIN657989 and ABIN2846936))immunohistochemistry analysis in formalin fixed and paraffin embedded human skin tissue followed by peroxidase conjugation of the secondary antibody and DAB staining.This data demonstrates the use of CSRP2 Antibody (Center) for immunohistochemistry. Clinical relevance has not been evaluated.



Western Blotting

Image 2. CSRP2 Antibody (Center) (ABIN657989 and ABIN2846936) western blot analysis in NCI- cell line lysates (35 µg/lane).This demonstrates the CSRP2 antibody detected the CSRP2 protein (arrow).



Western Blotting

Image 3. Western blot analysis of CSRP2 (arrow) using rabbit polyclonal CSRP2 Antibody (Center) (ABIN657989 and ABIN2846936). 293 cell lysates (2 µg/lane) either nontransfected (Lane 1) or transiently transfected (Lane 2) with the CSRP2 gene.