



[Go to Product page](#)

Datasheet for ABIN657992

## anti-BANF1 antibody (AA 37-65)

### 2 Images

#### Overview

Quantity:	400 µL
Target:	BANF1
Binding Specificity:	AA 37-65
Reactivity:	Human
Host:	Rabbit
Clonality:	Polyclonal
Application:	Western Blotting (WB), Immunohistochemistry (Paraffin-embedded Sections) (IHC (p))

#### Product Details

Immunogen:	This BANF1 antibody is generated from rabbits immunized with a KLH conjugated synthetic peptide between 37-65 amino acids from the Central region of human BANF1.
Clone:	RB34595
Isotype:	Ig Fraction
Predicted Reactivity:	B, M, Rat
Purification:	This antibody is purified through a protein A column, followed by peptide affinity purification.

#### Target Details

Target:	BANF1
Alternative Name:	BANF1 ( <a href="#">BANF1 Products</a> )
Background:	The protein encoded by this gene was first identified by its ability to protect retroviruses from

## Target Details

---

intramolecular integration and therefore promote intermolecular integration into the host cell genome. The protein forms a homodimer which localizes to both the nucleus and cytoplasm and is specifically associated with chromosomes during mitosis. This protein binds to double stranded DNA in a non-specific manner and also binds to LEM-domain containing proteins of the nuclear envelope. This protein is thought to facilitate nuclear reassembly by binding with both DNA and inner nuclear membrane proteins and thereby recruit chromatin to the nuclear periphery. Alternative splicing results in multiple transcript variants encoding the same protein.

Molecular Weight:	10059
Gene ID:	8815
NCBI Accession:	<a href="#">NP_001137457</a> , <a href="#">NP_003851</a>
UniProt:	<a href="#">O75531</a>

## Application Details

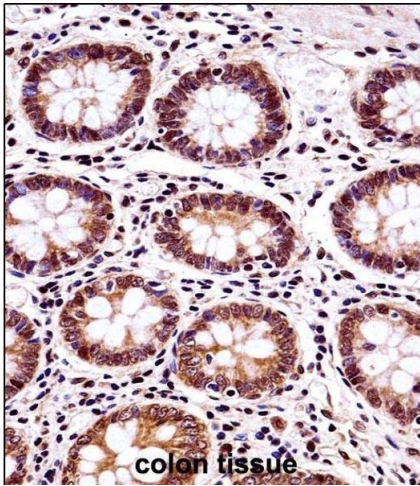
---

Application Notes:	WB: 1:1000. IHC-P: 1:10~50
Restrictions:	For Research Use only

## Handling

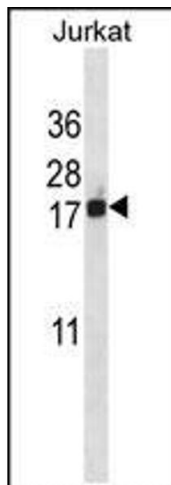
---

Format:	Liquid
Buffer:	Purified polyclonal antibody supplied in PBS with 0.09 % (W/V) sodium azide.
Preservative:	Sodium azide
Precaution of Use:	This product contains Sodium azide: a POISONOUS AND HAZARDOUS SUBSTANCE which should be handled by trained staff only.
Storage:	4 °C,-20 °C
Storage Comment:	BANF1 Antibody (Center) can be refrigerated at 2-8 °C for up to 6 months. For long term storage, place the at -20 °C.
Expiry Date:	6 months



### Immunohistochemistry (Paraffin-embedded Sections)

**Image 1.** BANF1 Antibody (Center) ((ABIN657992 and ABIN2846938))immunohistochemistry analysis in formalin fixed and paraffin embedded human colon tissue followed by peroxidase conjugation of the secondary antibody and DAB staining.This data demonstrates the use of BANF1 Antibody (Center) for immunohistochemistry. Clinical relevance has not been evaluated.



### Western Blotting

**Image 2.** BANF1 Antibody (Center) (ABIN657992 and ABIN2846938) western blot analysis in Jurkat cell line lysates (35 µg/lane).This demonstrates the BANF1 antibody detected the BANF1 protein (arrow).