

Datasheet for ABIN658015  
**anti-DDA1 antibody (AA 11-40)**

## 3 Images

[Go to Product page](#)

## Overview

Quantity:	400 µL
Target:	DDA1
Binding Specificity:	AA 11-40
Reactivity:	Human
Host:	Rabbit
Clonality:	Polyclonal
Application:	Western Blotting (WB), Immunohistochemistry (Paraffin-embedded Sections) (IHC (p))

## Product Details

Immunogen:	This PCIA1 antibody is generated from rabbits immunized with a KLH conjugated synthetic peptide between 11-40 amino acids from the Central region of human PCIA1.
Clone:	RB18541
Isotype:	Ig Fraction
Predicted Reactivity:	B, C, Zf, M, X
Purification:	This antibody is purified through a protein A column, followed by peptide affinity purification.

## Target Details

Target:	DDA1
Alternative Name:	PCIA1 ( <a href="#">DDA1 Products</a> )
Background:	PCIA1 may be involved in ubiquitination and subsequent proteasomal degradation of target

## Target Details

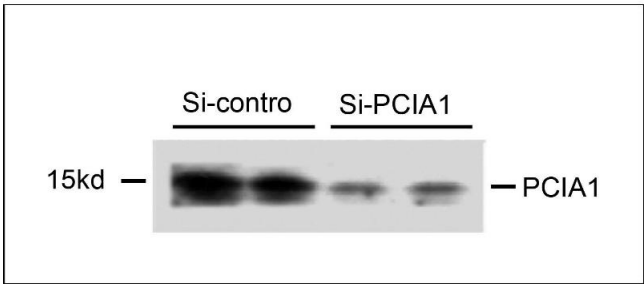
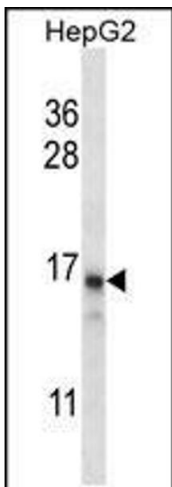
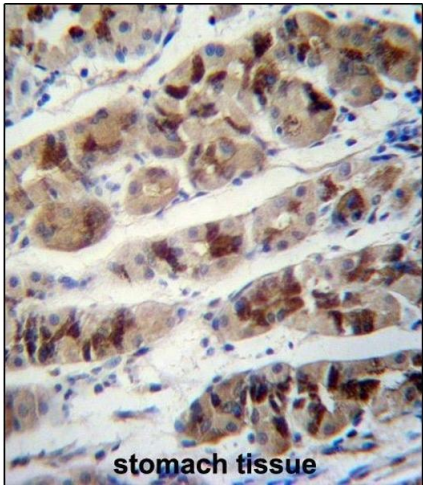
	proteins. Component of the DDD-E2 complexes which may provide a platform for interaction with CUL4A and WD repeat proteins.
Molecular Weight:	11835
Gene ID:	79016
NCBI Accession:	<a href="#">NP_076955</a>
UniProt:	<a href="#">Q9BW61</a>

## Application Details

Application Notes:	WB: 1:1000. WB: 1:300. IHC-P: 1:10~50
Restrictions:	For Research Use only

## Handling

Format:	Liquid
Buffer:	Purified polyclonal antibody supplied in PBS with 0.09 % (W/V) sodium azide.
Preservative:	Sodium azide
Precaution of Use:	This product contains Sodium azide: a POISONOUS AND HAZARDOUS SUBSTANCE which should be handled by trained staff only.
Storage:	4 °C,-20 °C
Storage Comment:	PCIA1 Antibody (Center) can be refrigerated at 2-8 °C for up to 6 months. For long term storage, place the at -20 °C.
Expiry Date:	6 months



**Immunohistochemistry (Paraffin-embedded Sections)**

**Image 1.** PCIA1 Antibody (Center) (ABIN658015 and ABIN2846953) immunohistochemistry analysis in formalin fixed and paraffin embedded human stomach tissue followed by peroxidase conjugation of the secondary antibody and DAB staining. This data demonstrates the use of PCIA1 Antibody (Center) for immunohistochemistry. Clinical relevance has not been evaluated.

**Western Blotting**

**Image 2.** PCIA1 Antibody (Center) (ABIN658015 and ABIN2846953) western blot analysis in HepG2 cell line lysates (35 µg/lane). This demonstrates the PCIA1 antibody detected the PCIA1 protein (arrow).

**Western Blotting**

**Image 3.** Western blot analysis of extracts from 293T cells that were transfected with si-control or transfected si-PCIA1, using rabbit polyclonal PCIA1 Antibody (Center) (ABIN658015 and ABIN2846953).