



[Go to Product page](#)

Datasheet for ABIN658023
anti-LMO2 antibody (N-Term)

2 Images

Overview

Quantity:	400 µL
Target:	LMO2
Binding Specificity:	AA 1-30, N-Term
Reactivity:	Human
Host:	Rabbit
Clonality:	Polyclonal
Application:	Western Blotting (WB), Immunohistochemistry (Paraffin-embedded Sections) (IHC (p))

Product Details

Immunogen:	This LMO2 antibody is generated from rabbits immunized with a KLH conjugated synthetic peptide between 1-30 amino acids from the N-terminal region of human LMO2.
Clone:	RB33753
Isotype:	Ig Fraction
Predicted Reactivity:	M
Purification:	This antibody is purified through a protein A column, followed by peptide affinity purification.

Target Details

Target:	LMO2
Alternative Name:	LMO2 (LMO2 Products)
Background:	LMO2 encodes a cysteine-rich, two LIM-domain protein that is required for yolk sac

Target Details

erythropoiesis. The LMO2 protein has a central and crucial role in hematopoietic development and is highly conserved. The LMO2 transcription start site is located approximately 25 kb downstream from the 11p13 T-cell translocation cluster (11p13 ttc), where a number T-cell acute lymphoblastic leukemia-specific translocations occur. Alternative splicing results in multiple transcript variants encoding different isoforms.

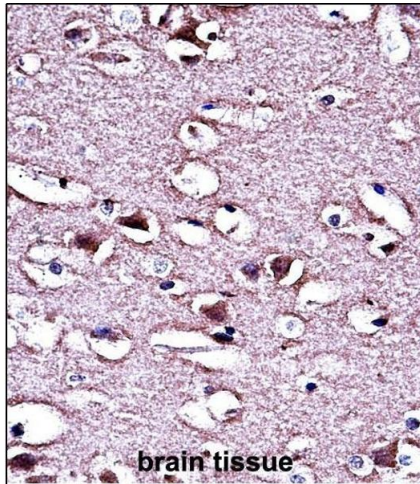
Molecular Weight:	18358
Gene ID:	4005
NCBI Accession:	NP_001135787 , NP_001135788 , NP_005565
UniProt:	P25791
Pathways:	Chromatin Binding

Application Details

Application Notes:	WB: 1:1000. IHC-P: 1:10~50
Restrictions:	For Research Use only

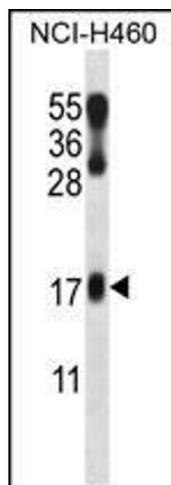
Handling

Format:	Liquid
Buffer:	Purified polyclonal antibody supplied in PBS with 0.09 % (W/V) sodium azide.
Preservative:	Sodium azide
Precaution of Use:	This product contains Sodium azide: a POISONOUS AND HAZARDOUS SUBSTANCE which should be handled by trained staff only.
Storage:	4 °C, -20 °C
Storage Comment:	LMO2 Antibody (N-term) can be refrigerated at 2-8 °C for up to 6 months. For long term storage, place the at -20 °C.
Expiry Date:	6 months



Immunohistochemistry (Paraffin-embedded Sections)

Image 1. LMO2 Antibody (N-term) (ABIN658023 and ABIN2846961) immunohistochemistry analysis in formalin fixed and paraffin embedded human brain tissue followed by peroxidase conjugation of the secondary antibody and DAB staining. This data demonstrates the use of LMO2 Antibody (N-term) for immunohistochemistry. Clinical relevance has not been evaluated.



Western Blotting

Image 2. LMO2 Antibody (N-term) (ABIN658023 and ABIN2846961) western blot analysis in NCI- cell line lysates (35 µg/lane). This demonstrates the LMO2 antibody detected the LMO2 protein (arrow).