

Datasheet for ABIN658027
anti-ERCC1 antibody (C-Term)[Go to Product page](#)

2 Images

Overview

Quantity:	400 µL
Target:	ERCC1
Binding Specificity:	AA 268-297, C-Term
Reactivity:	Human, Mouse
Host:	Rabbit
Clonality:	Polyclonal
Application:	Western Blotting (WB)

Product Details

Immunogen:	This ERCC1 antibody is generated from rabbits immunized with a KLH conjugated synthetic peptide between 268-297 amino acids from the C-terminal region of human ERCC1.
Clone:	RB33896
Isotype:	Ig Fraction
Purification:	This antibody is purified through a protein A column, followed by peptide affinity purification.

Target Details

Target:	ERCC1
Alternative Name:	ERCC1 (ERCC1 Products)
Background:	The product of this gene functions in the nucleotide excision repair pathway, and is required for the repair of DNA lesions such as those induced by UV light or formed by electrophilic compounds including cisplatin. The encoded protein forms a heterodimer with the XPF

Target Details

endonuclease (also known as ERCC4), and the heterodimeric endonuclease catalyzes the 5' incision in the process of excising the DNA lesion. The heterodimeric endonuclease is also involved in recombinational DNA repair and in the repair of inter-strand crosslinks. Mutations in this gene result in cerebrooculofacioskeletal syndrome, and polymorphisms that alter expression of this gene may play a role in carcinogenesis. Multiple transcript variants encoding different isoforms have been found for this gene. The last exon of this gene overlaps with the CD3e molecule, epsilon associated protein gene on the opposite strand.

Molecular Weight: 32562

Gene ID: 2067

NCBI Accession: [NP_001159521](#), [NP_001974](#), [NP_973730](#)

UniProt: [P07992](#)

Pathways: [DNA Damage Repair](#), [Production of Molecular Mediator of Immune Response](#)

Application Details

Application Notes: WB: 1:1000. WB: 1:1000

Restrictions: For Research Use only

Handling

Format: Liquid

Buffer: Purified polyclonal antibody supplied in PBS with 0.09 % (W/V) sodium azide.

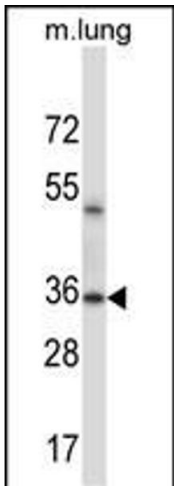
Preservative: Sodium azide

Precaution of Use: This product contains Sodium azide: a POISONOUS AND HAZARDOUS SUBSTANCE which should be handled by trained staff only.

Storage: 4 °C,-20 °C

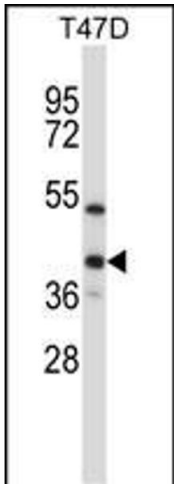
Storage Comment: ERCC1 Antibody (C-term) can be refrigerated at 2-8 °C for up to 6 months. For long term storage, place the at -20 °C.

Expiry Date: 6 months



Western Blotting

Image 1. ERCC1 Antibody (C-term) (ABIN658027 and ABIN2846965) western blot analysis in mouse lung tissue lysates (35 µg/lane). This demonstrates the ERCC1 antibody detected the ERCC1 protein (arrow).



Western Blotting

Image 2. ERCC1 Antibody (C-term) (ABIN658027 and ABIN2846965) western blot analysis in T47D cell line lysates (35 µg/lane). This demonstrates the ERCC1 antibody detected the ERCC1 protein (arrow).