

Datasheet for ABIN658094

anti-MLL5/KMT2E antibody (N-Term)**1** Image**1** Publication[Go to Product page](#)

Overview

Quantity:	400 µL
Target:	MLL5/KMT2E (MLL5)
Binding Specificity:	AA 93-120, N-Term
Reactivity:	Human
Host:	Rabbit
Clonality:	Polyclonal
Conjugate:	This MLL5/KMT2E antibody is un-conjugated
Application:	Western Blotting (WB)

Product Details

Immunogen:	This MLL5 antibody is generated from rabbits immunized with a KLH conjugated synthetic peptide between 93-120 amino acids from the N-terminal region of human MLL5.
Clone:	RB19215
Isotype:	Ig Fraction
Predicted Reactivity:	M
Purification:	This antibody is purified through a protein A column, followed by peptide affinity purification.

Target Details

Target:	MLL5/KMT2E (MLL5)
Alternative Name:	MLL5 (MLL5 Products)

Target Details

Background: This gene is a member of the myeloid/lymphoid or mixed-lineage leukemia (MLL) family and encodes a protein with an N-terminal PHD zinc finger and a central SET domain. Overexpression of the protein inhibits cell cycle progression. Alternate transcriptional splice variants have been characterized. [provided by RefSeq].

Molecular Weight: 204965

Gene ID: 55904

NCBI Accession: [NP_061152](#), [NP_891847](#)

UniProt: [Q8IZD2](#)

Pathways: [Retinoic Acid Receptor Signaling Pathway](#), [Warburg Effect](#)

Application Details

Application Notes: WB: 1:1000

Restrictions: For Research Use only

Handling

Format: Liquid

Buffer: Purified polyclonal antibody supplied in PBS with 0.09 % (W/V) sodium azide.

Preservative: Sodium azide

Precaution of Use: This product contains Sodium azide: a POISONOUS AND HAZARDOUS SUBSTANCE which should be handled by trained staff only.

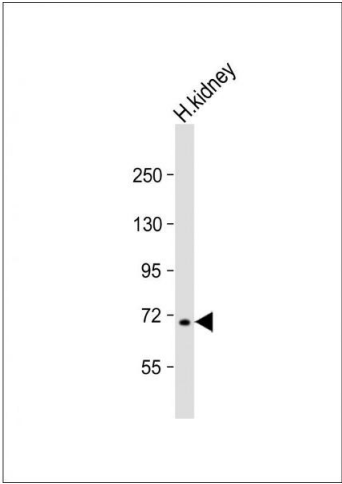
Storage: 4 °C,-20 °C

Storage Comment: MLL5 Antibody (N-term) can be refrigerated at 2-8 °C for up to 6 months. For long term storage, place the at -20 °C.

Expiry Date: 6 months

Publications

Product cited in: Zhou, Wang, Yuan, Zhou, Liu, Wan, Zhang, Ding, Wang, Xiong, Wang, Yuan, Li, Zhang: "Mixed lineage leukemia 5 (MLL5) protein regulates cell cycle progression and E2F1-responsive gene expression via association with host cell factor-1 (HCF-1)." in: **The Journal of biological chemistry**, Vol. 288, Issue 24, pp. 17532-43, (2013) ([PubMed](#)).



Western Blotting

Image 1. Anti-MLL5 Antibody (N-term) at 1:1000 dilution + human kidney lysate Lysates/proteins at 20 µg per lane. Secondary Goat Anti-Rabbit IgG, (H+L), Peroxidase conjugated at 1/10000 dilution. Predicted band size : 205 kDa Blocking/Dilution buffer: 5 % NFDM/TBST.