

Datasheet for ABIN658804  
**anti-TSPY1 antibody (C-Term)**[Go to Product page](#)

## 2 Images

## Overview

Quantity:	400 µL
Target:	TSPY1
Binding Specificity:	AA 274-303, C-Term
Reactivity:	Human
Host:	Rabbit
Clonality:	Polyclonal
Application:	Western Blotting (WB), Immunohistochemistry (Paraffin-embedded Sections) (IHC (p))

## Product Details

Immunogen:	This TSPY antibody is generated from rabbits immunized with a KLH conjugated synthetic peptide between 274-303 amino acids from the C-terminal region of human TSPY.
Clone:	RB35184
Isotype:	Ig Fraction
Purification:	This antibody is purified through a protein A column, followed by peptide affinity purification.

## Target Details

Target:	TSPY1
Alternative Name:	TSPY ( <a href="#">TSPY1 Products</a> )
Background:	TSPY may be involved in sperm differentiation and proliferation.
Molecular Weight:	35012

## Target Details

NCBI Accession: [NP\\_001071165](#), [NP\\_003299](#)

UniProt: [Q01534](#)

## Application Details

Application Notes: WB: 1:1000. IHC-P: 1:10~50

Restrictions: For Research Use only

## Handling

Format: Liquid

Buffer: Purified polyclonal antibody supplied in PBS with 0.09 % (W/V) sodium azide.

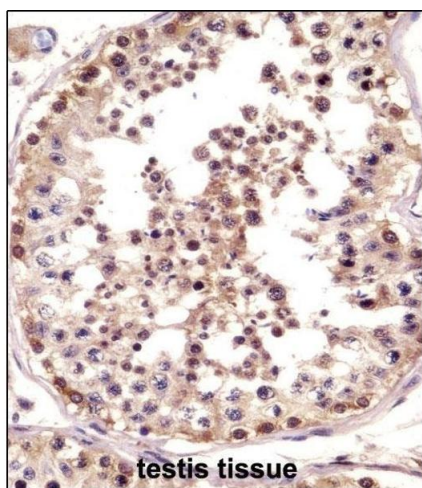
Preservative: Sodium azide

Precaution of Use: This product contains Sodium azide: a POISONOUS AND HAZARDOUS SUBSTANCE which should be handled by trained staff only.

Storage: 4 °C, -20 °C

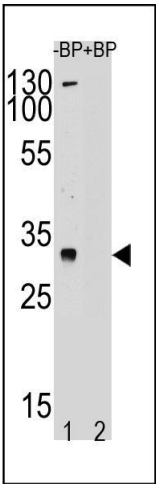
Expiry Date: 6 months

## Images



### Immunohistochemistry (Paraffin-embedded Sections)

**Image 1.** TSPY Antibody (C-term) ((ABIN658804 and ABIN2850505))immunohistochemistry analysis in formalin fixed and paraffin embedded human testis tissue followed by peroxidase conjugation of the secondary antibody and DAB staining.This data demonstrates the use of TSPY Antibody (C-term) for immunohistochemistry. Clinical relevance has not been evaluated.



Western Blotting

**Image 2.** Western blot analysis of TSPY Antibody (C-term) (ABIN658804 and ABIN2850505) pre-incubated without(lane 1) and with(lane 2) blocking peptide in LNC cell line lysate. TSPY (arrow) was detected using the purified TSPY Antibody (C-term).