



[Go to Product page](#)

Datasheet for ABIN658862

anti-GATA6 antibody (Isoform 2, pTyr271)

2 Images

Overview

| | |
|----------------------|--|
| Quantity: | 400 µL |
| Target: | GATA6 |
| Binding Specificity: | Isoform 2, pTyr271 |
| Reactivity: | Human |
| Host: | Rabbit |
| Clonality: | Polyclonal |
| Application: | Dot Blot (DB), Immunofluorescence (IF) |

Product Details

| | |
|---------------|---|
| Immunogen: | This Phospho-GATA6-Y271 antibody is generated from rabbits immunized with a KLH conjugated synthetic phosphopeptide surrounding Y271 of human GATA6, isoform 2. |
| Clone: | RB34697 |
| Isotype: | Ig Fraction |
| Purification: | This antibody is purified through a protein A column, followed by peptide affinity purification. |

Target Details

| | |
|-------------------|---|
| Target: | GATA6 |
| Alternative Name: | GATA6- (GATA6 Products) |
| Background: | Thought to be important for regulating terminal differentiation and/or proliferation. |
| Molecular Weight: | 60033 |

Target Details

Gene ID: 2627

NCBI Accession: [NP_005248](#)

UniProt: [Q92908](#)

Application Details

Application Notes: IF: 1:100. DB: 1:500

Restrictions: For Research Use only

Handling

Format: Liquid

Buffer: Purified polyclonal antibody supplied in PBS with 0.09 % (W/V) sodium azide.

Preservative: Sodium azide

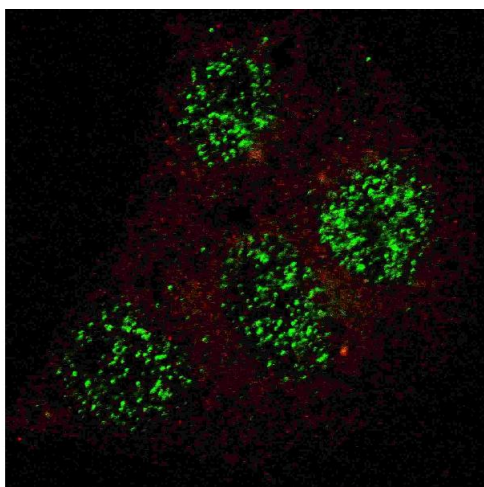
Precaution of Use: This product contains Sodium azide: a POISONOUS AND HAZARDOUS SUBSTANCE which should be handled by trained staff only.

Storage: 4 °C, -20 °C

Storage Comment: Maintain refrigerated at 2-8 °C for up to 6 months. For long term storage store at -20 °C in small aliquots to prevent freeze-thaw cycles.

Expiry Date: 6 months

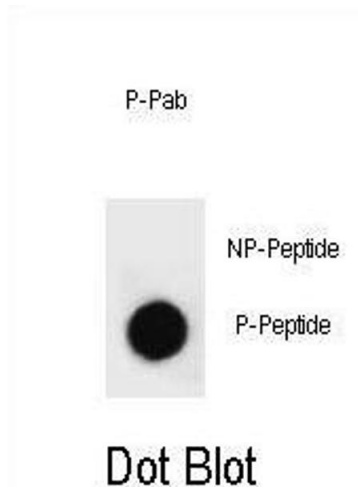
Images



Immunofluorescence

Image 1. Fluorescent confocal image of HepG2 cells stained with phospho-GATA6- antibody. HepG2 cells were fixed with 4 % PFA (20 min), permeabilized with Triton X-100 (0.2 %, 30 min). Cells were then incubated with (ABIN658862 and ABIN2839836) phospho-GATA6- primary antibody (1:100, 2 h at room temperature). For secondary antibody, Alexa Fluor® 488 conjugated donkey anti-rabbit antibody (green) was used (1:1000, 1h). Nuclei were counterstained with Hoechst 33342 (blue) (10 µg/mL,

5 min). Note the highly specific localization of the phospho-GATA6 immunosignal mainly to the nucleus.



Dot Blot

Image 2. Dot blot analysis of Phospho-GATA6-p Phospho-specific Pab (ABIN658862 and ABIN2839836) on nitrocellulose membrane. 50 ng of Phospho-peptide or Non Phospho-peptide per dot were adsorbed. Antibody working concentrations are 0.6 μ g per ml.