



[Go to Product page](#)

Datasheet for ABIN658910  
**anti-FSHB antibody (AA 36-64)**

1 Image

### Overview

Quantity:	400 µL
Target:	FSHB
Binding Specificity:	AA 36-64
Reactivity:	Human
Host:	Mouse
Clonality:	Monoclonal
Application:	Western Blotting (WB)

### Product Details

Immunogen:	This FSHB/FSH antibody is generated from mice immunized with a KLH conjugated synthetic peptide between 36-64 amino acids from the Central region of human FSHB/FSH.
Clone:	365CT24-1-1
Isotype:	IgG3
Purification:	This antibody is purified through a protein G column, followed by dialysis against PBS.

### Target Details

Target:	FSHB
Alternative Name:	FSHB/FSH ( <a href="#">FSHB Products</a> )
Background:	The pituitary glycoprotein hormone family includes follicle-stimulating hormone, luteinizing hormone, chorionic gonadotropin, and thyroid-stimulating hormone. All of these glycoproteins consist of an identical alpha subunit and a hormone-specific beta subunit. This gene encodes

## Target Details

---

the beta subunit of follicle-stimulating hormone. In conjunction with luteinizing hormone, follicle-stimulating hormone induces egg and sperm production. Alternative splicing results in two transcript variants encoding the same protein.

Molecular Weight: 14700

NCBI Accession: [NP\\_000501](#), [NP\\_001018090](#)

UniProt: [P01225](#)

Pathways: [Peptide Hormone Metabolism](#), [Hormone Activity](#), [C21-Steroid Hormone Metabolic Process](#)

## Application Details

---

Application Notes: WB: 1:150~1500

Restrictions: For Research Use only

## Handling

---

Format: Liquid

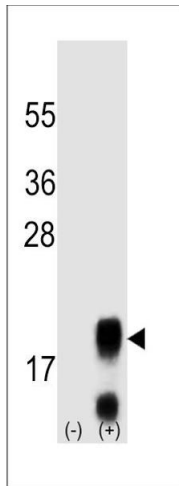
Buffer: Purified monoclonal antibody supplied in PBS with 0.09 % (W/V) sodium azide.

Preservative: Sodium azide

Precaution of Use: This product contains Sodium azide: a POISONOUS AND HAZARDOUS SUBSTANCE which should be handled by trained staff only.

Storage: 4 °C, -20 °C

Expiry Date: 6 months



### Western Blotting

**Image 1.** Western blot analysis of FSHB/FSH (arrow) using mouse polyclonal FSHB/FSH antibody (Center) (ABIN658910 and ABIN2837836). 293 cell lysates (2  $\mu$ g/lane) either nontransfected (Lane 1) or transiently transfected (Lane 2) with the FSHB/FSH gene.