

Datasheet for ABIN658993

**anti-ALDH2 antibody**

## 4 Images

[Go to Product page](#)

## Overview

Quantity:	400 µL
Target:	ALDH2
Reactivity:	Human
Host:	Mouse
Clonality:	Monoclonal
Application:	Western Blotting (WB), Immunofluorescence (IF), Flow Cytometry (FACS), Immunohistochemistry (Paraffin-embedded Sections) (IHC (p))

## Product Details

Immunogen:	This ALDH2 Monoclonal antibody is generated from mouse immunized with ALDH2 recombinant protein.
Clone:	138CT22-3-8
Isotype:	Ig kappa, IgG1
Purification:	This antibody is purified through a protein G column, followed by dialysis against PBS.

## Target Details

Target:	ALDH2
Alternative Name:	ALDH2 ( <a href="#">ALDH2 Products</a> )
Background:	This protein belongs to the aldehyde dehydrogenase family of proteins. Aldehyde dehydrogenase is the second enzyme of the major oxidative pathway of alcohol metabolism. Two major liver isoforms of this enzyme, cytosolic and mitochondrial, can be distinguished by

## Target Details

their electrophoretic mobilities, kinetic properties, and subcellular localizations. Most Caucasians have two major isozymes, while approximately 50 % of Orientals have only the cytosolic isozyme, missing the mitochondrial isozyme. A remarkably higher frequency of acute alcohol intoxication among Orientals than among Caucasians could be related to the absence of the mitochondrial isozyme. This gene encodes a mitochondrial isoform, which has a low  $K_m$  for acetaldehydes, and is localized in mitochondrial matrix.

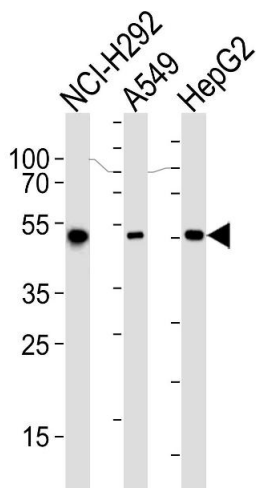
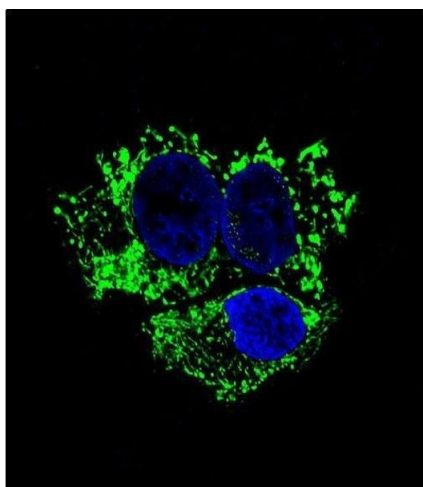
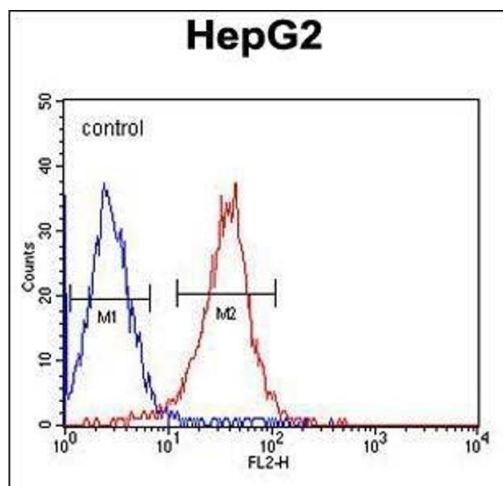
Molecular Weight:	56381
Gene ID:	217
NCBI Accession:	<a href="#">NP_000681</a> , <a href="#">NP_001191818</a>
UniProt:	<a href="#">P05091</a>

## Application Details

Application Notes:	IF: 1:10~50. WB: 1:1000. IHC-P: 1:50~100. FC: 1:10~50
Restrictions:	For Research Use only

## Handling

Format:	Liquid
Buffer:	Purified monoclonal antibody supplied in PBS with 0.09 % (W/V) sodium azide.
Preservative:	Sodium azide
Precaution of Use:	This product contains Sodium azide: a POISONOUS AND HAZARDOUS SUBSTANCE which should be handled by trained staff only.
Storage:	4 °C, -20 °C
Storage Comment:	Maintain refrigerated at 2-8 °C for up to 6 months. For long term storage store at -20 °C in small aliquots to prevent freeze-thaw cycles.
Expiry Date:	6 months



### Flow Cytometry

**Image 1.** ALDH2 Monoclonal Antibody (ABIN658993 and ABIN2838036) flow cytometric analysis of HepG2 cells (right histogram) compared to a negative control cell (left histogram). PE-conjugated goat-anti-mouse secondary antibodies were used for the analysis.

### Immunofluorescence

**Image 2.** Confocal immunofluorescent analysis of ALDH2 Antibody (ABIN658993 and ABIN2838036) with HepG2 cell followed by Alexa Fluor® 488-conjugated goat anti-mouse IgG (green). DAPI was used to stain the cell nuclear (blue).

### Western Blotting

**Image 3.** Western blot analysis of lysates from NCI-, A549, HepG2 cell line (from left to right), using ALDH2 Antibody (ABIN658993 and ABIN2838036). (ABIN658993 and ABIN2838036) was diluted at 1:1000 at each lane. A goat anti-mouse IgG H&L(HRP) at 1:3000 dilution was used as the secondary antibody. Lysates at 35 µg per lane.

Please check the [product details page](#) for more images. Overall 4 images are available for ABIN658993.