

Datasheet for ABIN659014

**anti-HLA-A antibody (AA 70-99)**[Go to Product page](#)**1** Image

## Overview

Quantity:	400 µL
Target:	HLA-A
Binding Specificity:	AA 70-99
Reactivity:	Mouse
Host:	Mouse
Clonality:	Monoclonal
Application:	Western Blotting (WB)

## Product Details

Immunogen:	This HLA-A antibody is generated from mice immunized with a KLH conjugated synthetic peptide between 70-99 amino acids from the Central region of human HLA-A.
Clone:	7G7F9
Isotype:	Ig Fraction, IgG1
Predicted Reactivity:	H
Purification:	This antibody is purified through a protein G column, followed by dialysis against PBS.

## Target Details

Target:	HLA-A
Alternative Name:	HLA-A ( <a href="#">HLA-A Products</a> )
Background:	HLA-A belongs to the HLA class I heavy chain paralogues. This class I molecule is a

## Target Details

heterodimer consisting of a heavy chain and a light chain (beta-2 microglobulin). The heavy chain is anchored in the membrane. Class I molecules play a central role in the immune system by presenting peptides derived from the endoplasmic reticulum lumen. They are expressed in nearly all cells. The heavy chain is approximately 45 kDa and its gene contains 8 exons. Exon 1 encodes the leader peptide, exons 2 and 3 encode the alpha1 and alpha2 domains, which both bind the peptide, exon 4 encodes the alpha3 domain, exon 5 encodes the transmembrane region, and exons 6 and 7 encode the cytoplasmic tail. Polymorphisms within exon 2 and exon 3 are responsible for the peptide binding specificity of each class one molecule. Typing for these polymorphisms is routinely done for bone marrow and kidney transplantation. Hundreds of HLA-A alleles have been described.

Molecular Weight: 40841

Gene ID: 3105

NCBI Accession: [NP\\_002107](#)

UniProt: [P04439](#)

Pathways: [TCR Signaling](#), [Regulation of Leukocyte Mediated Immunity](#), [Positive Regulation of Immune Effector Process](#), [Cancer Immune Checkpoints](#), [Human Leukocyte Antigen \(HLA\) in Adaptive Immune Response](#)

## Application Details

Application Notes: WB: 1:100~250

Restrictions: For Research Use only

## Handling

Format: Liquid

Buffer: Purified monoclonal antibody supplied in PBS with 0.09 % (W/V) sodium azide.

Preservative: Sodium azide

Precaution of Use: This product contains Sodium azide: a POISONOUS AND HAZARDOUS SUBSTANCE which should be handled by trained staff only.

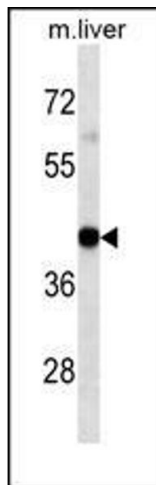
Storage: 4 °C,-20 °C

Storage Comment: HLA-A Antibody(Center) can be refrigerated at 2-8 °C for up to 6 months. For long term storage, place the at -20 °C.

## Handling

Expiry Date: 6 months

## Images



### Western Blotting

**Image 1.** HLA-A Antibody western blot analysis in mouse Liver tissue lysates (35 µg/lane). This demonstrates the HLA-A antibody detected the HLA-A protein (arrow).