

Datasheet for ABIN659030

anti-LAMP2 antibody**3** Images[Go to Product page](#)

Overview

Quantity:	400 µL
Target:	LAMP2
Reactivity:	Human
Host:	Mouse
Clonality:	Monoclonal
Application:	Western Blotting (WB), Immunofluorescence (IF)

Product Details

Immunogen:	This LAMP2 monoclonal antibody is generated from mouse immunized with LAMP2 recombinant protein.
Clone:	157CT16-6-6
Isotype:	IgG1 kappa
Purification:	This antibody is purified through a protein G column, followed by dialysis against PBS.

Target Details

Target:	LAMP2
Alternative Name:	LAMP2 (LAMP2 Products)
Background:	Implicated in tumor cell metastasis. May function in protection of the lysosomal membrane from autodigestion, maintenance of the acidic environment of the lysosome, adhesion when expressed on the cell surface (plasma membrane), and inter-and intracellular signal transduction. Protects cells from the toxic effects of methylating mutagens.

Target Details

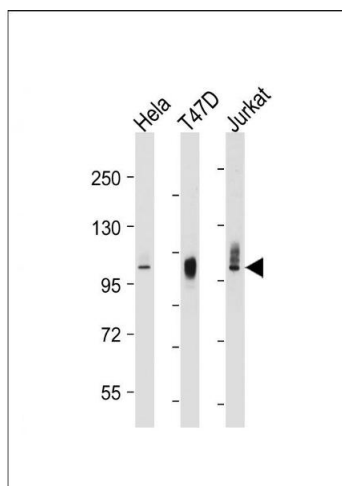
Molecular Weight:	44961
Gene ID:	3920
NCBI Accession:	NP_001116078 , NP_002285 , NP_054701
UniProt:	P13473
Pathways:	Autophagy

Application Details

Application Notes:	IF: 1:10~50. IHC: 1:500. WB: 1:2000-8000
Restrictions:	For Research Use only

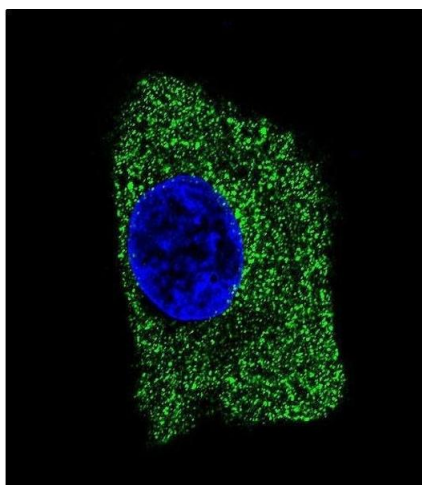
Handling

Format:	Liquid
Buffer:	Purified monoclonal antibody supplied in PBS with 0.09 % (W/V) sodium azide.
Preservative:	Sodium azide
Precaution of Use:	This product contains Sodium azide: a POISONOUS AND HAZARDOUS SUBSTANCE which should be handled by trained staff only.
Storage:	4 °C, -20 °C
Storage Comment:	Maintain refrigerated at 2-8 °C for up to 6 months. For long term storage store at -20 °C in small aliquots to prevent freeze-thaw cycles.
Expiry Date:	6 months



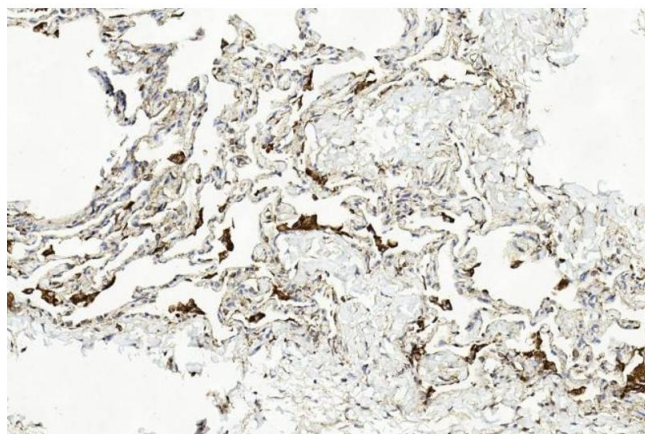
Western Blotting

Image 1. All lanes : Anti-LP2 Antibody at 1:2000-8000 dilution Lane 1: HeLa whole cell lysate Lane 2: T47D whole cell lysate Lane 3: Jurkat whole cell lysate Lysates/proteins at 20 µg per lane. Secondary Goat Anti-mouse IgG, (H+L), Peroxidase conjugated at 1/10000 dilution. Predicted band size : 45 kDa Blocking/Dilution buffer: 5 % NFDm/TBST.



Immunofluorescence

Image 2. Confocal immunofluorescent analysis of LP2 Antibody 1851b with HepG2 cell followed by Alexa Fluor® 488-conjugated goat anti-mouse IgG (green). DI was used to stain the cell nuclear (blue).



Immunohistochemistry

Image 3. Immunohistochemical analysis of paraffin-embedded Human lung section using Pink1 am1851b. am1851b was diluted at 1:500 dilution. A undiluted biotinylated goat polyvalent antibody was used as the secondary, followed by DAB staining.