

Datasheet for ABIN659042

anti-MIPEP antibody[Go to Product page](#)**1** Image

Overview

Quantity:	400 µL
Target:	MIPEP
Reactivity:	Human
Host:	Mouse
Clonality:	Monoclonal
Conjugate:	This MIPEP antibody is un-conjugated
Application:	Western Blotting (WB)

Product Details

Immunogen:	This MIPEP monoclonal antibody is generated from mouse immunized with MIPEP recombinant protein.
Clone:	166CT22-3-7
Isotype:	IgG1 kappa
Purification:	This antibody is purified through a protein G column, followed by dialysis against PBS.

Target Details

Target:	MIPEP
Alternative Name:	MIPEP (MIPEP Products)
Background:	Cleaves proteins, imported into the mitochondrion, to their mature size.
Molecular Weight:	80641

Target Details

Gene ID:	4285
NCBI Accession:	NP_005923
UniProt:	Q99797

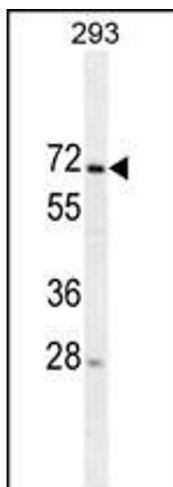
Application Details

Application Notes:	WB: 1:100~1000
Restrictions:	For Research Use only

Handling

Format:	Liquid
Buffer:	Purified monoclonal antibody supplied in PBS with 0.09 % (W/V) sodium azide.
Preservative:	Sodium azide
Precaution of Use:	This product contains Sodium azide: a POISONOUS AND HAZARDOUS SUBSTANCE which should be handled by trained staff only.
Storage:	4 °C,-20 °C
Storage Comment:	Maintain refrigerated at 2-8 °C for up to 6 months. For long term storage store at -20 °C in small aliquots to prevent freeze-thaw cycles.
Expiry Date:	6 months

Images



Western Blotting

Image 1. MIPEP Antibody (ABIN659042 and ABIN2838054) western blot analysis in 293 cell line lysates (35 µg/lane). This demonstrates the MIPEP antibody detected the MIPEP protein (arrow).