

Datasheet for ABIN659068  
**anti-PAX6 antibody**



[Go to Product page](#)

2 Images

## Overview

Quantity:	0.1 mL
Target:	PAX6
Reactivity:	Human
Host:	Mouse
Clonality:	Monoclonal
Conjugate:	This PAX6 antibody is un-conjugated
Application:	Western Blotting (WB), Immunofluorescence (IF)

## Product Details

Immunogen:	This PAX6 Monoclonal antibody was raised using purified His-tagged recombinant human PAX6.
Clone:	193CT15-2-2
Isotype:	IgM kappa
Predicted Reactivity:	B, M
Purification:	Mouse monoclonal antibody supplied in crude ascites with 0.09% (W/V) sodium azide.

## Target Details

Target:	PAX6
Alternative Name:	PAX6 ( <a href="#">PAX6 Products</a> )
Background:	This gene encodes paired box gene 6, one of many human homologs of the Drosophila

## Target Details

melanogaster gene prd. In addition to the hallmark feature of this gene family, a conserved paired box domain, the encoded protein also contains a homeo box domain. Both domains are known to bind DNA, and function as regulators of gene transcription. This gene is expressed in the developing nervous system, and in developing eyes. Mutations in this gene are known to cause ocular disorders such as aniridia and Peter's anomaly. Alternatively spliced transcript variants encoding either the same or different isoform have been found for this gene. [provided by RefSeq].

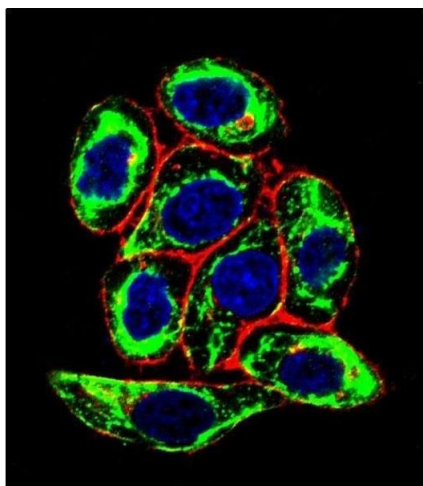
Molecular Weight:	46683
Gene ID:	5080
NCBI Accession:	<a href="#">NP_000271</a> , <a href="#">NP_001121084</a> , <a href="#">NP_001245393</a> , <a href="#">NP_001245394</a> , <a href="#">NP_001595</a>
UniProt:	<a href="#">P26367</a>
Pathways:	<a href="#">Peptide Hormone Metabolism</a> , <a href="#">Carbohydrate Homeostasis</a>

## Application Details

Application Notes:	IF: 1:10~50. WB: 1:500~16000
Restrictions:	For Research Use only

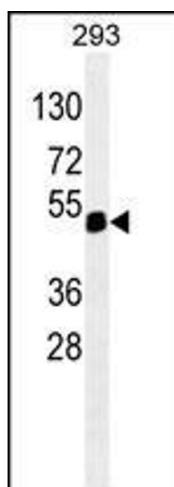
## Handling

Format:	Liquid
Buffer:	Mouse monoclonal antibody supplied in crude ascites with 0.09 % (W/V) sodium azide.
Preservative:	Sodium azide
Precaution of Use:	This product contains Sodium azide: a POISONOUS AND HAZARDOUS SUBSTANCE which should be handled by trained staff only.
Handling Advice:	Avoid freeze-thaw cycles.
Storage:	4 °C, -20 °C
Storage Comment:	Maintain refrigerated at 2-8 °C for up to 6 months. For long term storage store at -20 °C in small aliquots to prevent freeze-thaw cycles.
Expiry Date:	6 months



#### Immunofluorescence

**Image 1.** Confocal immunofluorescent analysis of X6 Antibody (Ascites) ABIN659068 with Hela cell followed by Alexa Fluor® 488-conjugated goat anti-mouse IgG (green). Actin filaments have been labeled with Alexa Fluor 555 phalloidin (red). DI was used to stain the cell nuclear (blue).



#### Western Blotting

**Image 2.** X6 ABIN659068 western blot analysis in 293 cell line lysates (35 µg/lane). This demonstrates the X6 antibody detected the X6 protein (arrow).