



[Go to Product page](#)

Datasheet for ABIN659081

anti-ZEB1 antibody (AA 69-97)

2 Images

Overview

Quantity:	0.1 mL
Target:	ZEB1
Binding Specificity:	AA 69-97
Reactivity:	Human
Host:	Mouse
Clonality:	Monoclonal
Application:	Western Blotting (WB), Flow Cytometry (FACS)

Product Details

Immunogen:	This ZEB1 antibody is generated from mice immunized with a KLH conjugated synthetic peptide between 69-97 amino acids from human ZEB1.
Clone:	213CT14-1-5
Isotype:	IgG1 kappa
Purification:	Mouse monoclonal antibody supplied in crude ascites with 0.09% (W/V) sodium azide.

Target Details

Target:	ZEB1
Alternative Name:	ZEB1 (ZEB1 Products)
Background:	This gene encodes a zinc finger transcription factor. The encoded protein likely plays a role in transcriptional repression of interleukin 2. Mutations in this gene have been associated with posterior polymorphous corneal dystrophy-3 and late-onset Fuchs endothelial corneal

Target Details

dystrophy. Alternatively spliced transcript variants encoding different isoforms have been described.

Molecular Weight: 124074

Gene ID: 6935

NCBI Accession: [NP_001121600](#), [NP_001167564](#), [NP_001167565](#), [NP_001167566](#), [NP_001167567](#), [NP_110378](#)

UniProt: [P37275](#)

Pathways: [Regulation of Muscle Cell Differentiation](#)

Application Details

Application Notes: WB: 1:500~16000. FC: 1:10~50

Restrictions: For Research Use only

Handling

Format: Liquid

Buffer: Mouse monoclonal antibody supplied in crude ascites with 0.09 % (W/V) sodium azide.

Preservative: Sodium azide

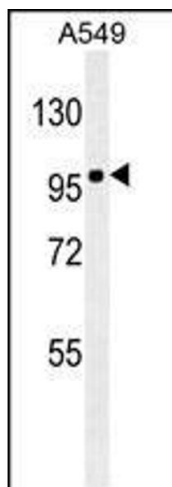
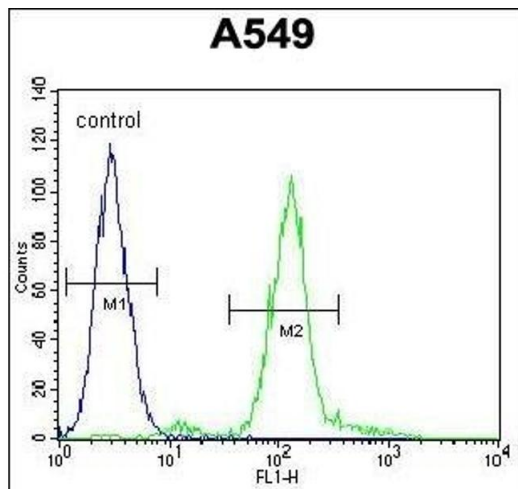
Precaution of Use: This product contains Sodium azide: a POISONOUS AND HAZARDOUS SUBSTANCE which should be handled by trained staff only.

Handling Advice: Avoid freeze-thaw cycles.

Storage: 4 °C,-20 °C

Storage Comment: Maintain refrigerated at 2-8 °C for up to 6 months. For long term storage store at -20 °C in small aliquots to prevent freeze-thaw cycles.

Expiry Date: 6 months



Flow Cytometry

Image 1. ZEB1 Antibody (Ascites) ABIN659081 flow cytometric analysis of A549 cells (right histogram) compared to a negative control cell (left histogram).FITC-conjugated goat-anti-mouse secondary antibodies were used for the analysis.

Western Blotting

Image 2. ZEB1 Antibody (Ascites) ABIN659081 western blot analysis in A549 cell line lysates (35 µg/lane).This demonstrates the ZEB1 antibody detected the ZEB1 protein (arrow).