

Datasheet for ABIN659101

anti-COQ8A antibody**2** Images[Go to Product page](#)

Overview

Quantity:	400 µL
Target:	COQ8A
Reactivity:	Human
Host:	Mouse
Clonality:	Monoclonal
Application:	Western Blotting (WB), Immunofluorescence (IF)

Product Details

Immunogen:	This CAB1 monoclonal antibody is generated from mouse immunized with CAB1 recombinant protein.
Clone:	216CT7-5-1
Isotype:	IgG1 kappa
Purification:	This antibody is purified through a protein G column, followed by dialysis against PBS.

Target Details

Target:	COQ8A
Alternative Name:	CAB1 (COQ8A Products)
Background:	This gene encodes a mitochondrial protein similar to yeast ABC1, which functions in an electron-transferring membrane protein complex in the respiratory chain. It is not related to the family of ABC transporter proteins. Expression of this gene is induced by the tumor suppressor p53 and in response to DNA damage, and inhibiting its expression partially suppresses p53-

Target Details

induced apoptosis. Alternatively spliced transcript variants have been found, however, their full-length nature has not been determined.

Molecular Weight: 71950

Gene ID: 56997

NCBI Accession: [NP_064632](#)

UniProt: [Q8NI60](#)

Application Details

Application Notes: IF: 1:10~50. WB: 1:100~250

Restrictions: For Research Use only

Handling

Format: Liquid

Buffer: Purified monoclonal antibody supplied in PBS with 0.09 % (W/V) sodium azide.

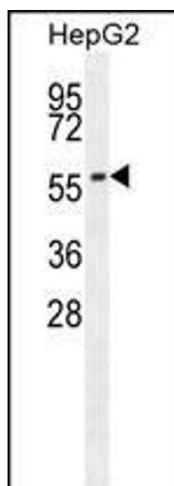
Preservative: Sodium azide

Precaution of Use: This product contains Sodium azide: a POISONOUS AND HAZARDOUS SUBSTANCE which should be handled by trained staff only.

Storage: 4 °C,-20 °C

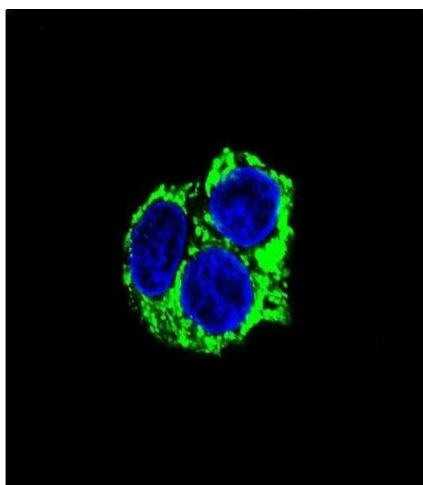
Storage Comment: Maintain refrigerated at 2-8 °C for up to 6 months. For long term storage store at -20 °C in small aliquots to prevent freeze-thaw cycles.

Expiry Date: 6 months



Western Blotting

Image 1. CAB1 antibody (ABIN659101 and ABIN2838085) western blot analysis in HepG2 cell line lysates (35 μ g/lane). This demonstrates the CAB1 antibody detected the CAB1 protein (arrow).



Immunofluorescence

Image 2. Confocal immunofluorescent analysis of CAB1 Antibody (ABIN659101 and ABIN2838085) with HepG2 cell followed by Alexa Fluor® 488-conjugated goat anti-mouse IgG (green). DAPI was used to stain the cell nuclear (blue).