



Datasheet for ABIN659163  
**anti-RPS6KL1 antibody**



[Go to Product page](#)

2 Images

### Overview

Quantity:	400 µL
Target:	RPS6KL1
Reactivity:	Mouse, Hamster
Host:	Mouse
Clonality:	Monoclonal
Application:	Western Blotting (WB)

### Product Details

Immunogen:	This RPS6KL1 monoclonal antibody is generated from mouse immunized with RPS6KL1 recombinant protein.
Clone:	273CT4-5-3
Isotype:	IgM kappa
Purification:	This antibody is prepared by Euglobin precipitation followed by dialysis against PBS.

### Target Details

Target:	RPS6KL1
Alternative Name:	RPS6KL1 ( <a href="#">RPS6KL1 Products</a> )
Molecular Weight:	60036
Gene ID:	83694
NCBI Accession:	<a href="#">NP_113652</a>

## Target Details

UniProt: [Q9Y6S9](#)

## Application Details

Application Notes: WB: 1:100~250. WB: 1:100~250

Restrictions: For Research Use only

## Handling

Format: Liquid

Buffer: Purified monoclonal antibody supplied in PBS with 0.09 % (W/V) sodium azide.

Preservative: Sodium azide

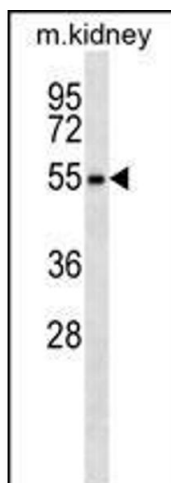
Precaution of Use: This product contains Sodium azide: a POISONOUS AND HAZARDOUS SUBSTANCE which should be handled by trained staff only.

Storage: 4 °C,-20 °C

Storage Comment: RPS6KL1 Antibody can be refrigerated at 2-8 °C for up to 6 months. For long term storage, place the at -20 °C.

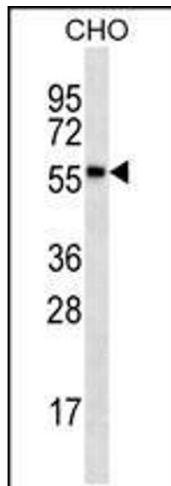
Expiry Date: 6 months

## Images



### Western Blotting

**Image 1.** RPS6KL1 Antibody (ABIN659163 and ABIN2843777) western blot analysis in mouse kidney tissue lysates (35 µg/lane). This demonstrates the RPS6KL1 antibody detected the RPS6KL1 protein (arrow).



### Western Blotting

**Image 2.** RPS6KL1 Antibody (ABIN659163 and ABIN2843777) western blot analysis in CHO cell line lysates (35 µg/lane). This demonstrates the RPS6KL1 antibody detected the RPS6KL1 protein (arrow).