

Datasheet for ABIN6654013  
**anti-Arylsulfatase A antibody**

2 Images



[Go to Product page](#)

## Overview

Quantity:	100 µg
Target:	Arylsulfatase A (ARSA)
Reactivity:	Human, Mouse, Rat
Host:	Mouse
Clonality:	Monoclonal
Conjugate:	This Arylsulfatase A antibody is un-conjugated
Application:	Western Blotting (WB), Flow Cytometry (FACS)

## Product Details

Immunogen:	Amino acids QALKQLQLLKAQLDAAVTFGPSQVARGED were used as the immunogen for the ARSA antibody.
Clone:	4C10
Isotype:	IgG2a
Purification:	Protein G affinity

## Target Details

Target:	Arylsulfatase A (ARSA)
Alternative Name:	ARSA ( <a href="#">ARSA Products</a> )
Background:	Arylsulfatase A (ARSA) is an enzyme that breaks down sulfatides, namely cerebroside 3-sulfate into cerebroside and sulfate. In humans, arylsulfatase A is encoded by the ARSA gene. ARSA is mapped to 22q13.33. The protein encoded by this gene hydrolyzes cerebroside sulfate to

## Target Details

cerebroside and sulfate. Defects in this gene lead to metachromatic leucodystrophy (MLD), a progressive demyelination disease which results in a variety of neurological symptoms and ultimately death. Alternatively spliced transcript variants have been described for this gene.

UniProt: [P15289](#)

## Application Details

Application Notes: Optimal dilution of the ARSA antibody should be determined by the researcher.\. Western blot: 0.5-1 µg/mL,Flow Cytometry: 1-3 µg/10<sup>6</sup> cells

Restrictions: For Research Use only

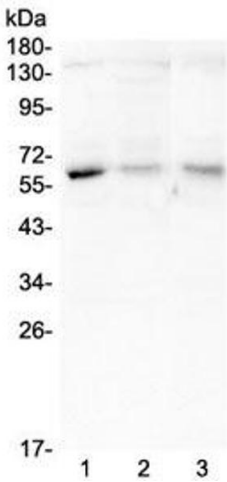
## Handling

Buffer: 0.5 mg/mL if reconstituted with 0.2 mL sterile DI water

Storage: -20 °C

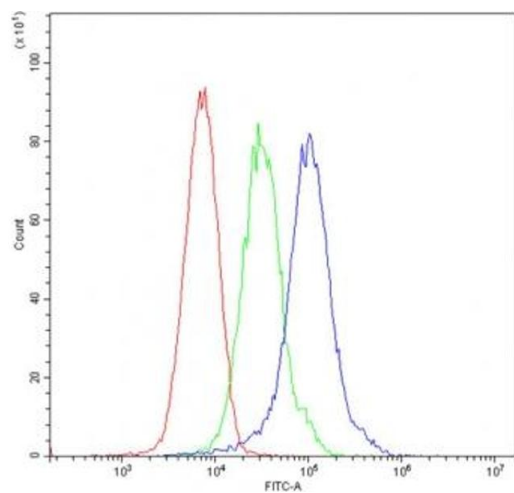
Storage Comment: After reconstitution, the ARSA antibody can be stored for up to one month at 4°C. For long-term, aliquot and store at -20°C. Avoid repeated freezing and thawing.

## Images



### Western Blotting

**Image 1.** Western blot testing of human 1) A375, 2) A549 and 3) SMMC-7721 lysate with ARSA antibody at 0.5µg/ml. Expected molecular weight: 53-63 kDa.



### Flow Cytometry

**Image 2.** Flow cytometry testing of mouse ANA-1 cells with ARSA antibody at  $1\mu\text{g}/10^6$  cells (blocked with goat sera)