

Datasheet for ABIN6654030  
**anti-Cathepsin E antibody (AA 150-393)**[Go to Product page](#)

## 2 Images

## Overview

Quantity:	100 µg
Target:	Cathepsin E (CTSE)
Binding Specificity:	AA 150-393
Reactivity:	Human, Mouse, Rat
Host:	Rabbit
Clonality:	Polyclonal
Conjugate:	This Cathepsin E antibody is un-conjugated
Application:	Western Blotting (WB), ELISA, Immunohistochemistry (Paraffin-embedded Sections) (IHC (p))

## Product Details

Immunogen:	Human Cathepsin E recombinant protein (amino acids A150-R393) was used as the immunogen for the Cathepsin E antibody.
Isotype:	IgG
Purification:	Antigen affinity purified

## Target Details

Target:	Cathepsin E (CTSE)
Alternative Name:	Cathepsin E / CTSE ( <a href="#">CTSE Products</a> )
Background:	Cathepsin E is an enzyme that in humans is encoded by the CTSE gene. This gene encodes a member of the A1 family of peptidases. Alternative splicing of this gene results in multiple transcript variants. At least one of these variants encodes a preproprotein that is proteolytically

## Target Details

processed to generate the mature enzyme. This enzyme, an aspartic endopeptidase, may be involved in antigen processing and the maturation of secretory proteins. Elevated expression of this gene has been observed in neurodegeneration.

UniProt: [P14091](#)

## Application Details

Application Notes: Optimal dilution of the Cathepsin E antibody should be determined by the researcher.\. Western blot: 0.5-1 µg/mL, Immunohistochemistry (FFPE): 1-2 µg/mL, ELISA (capture): 1-5 µg/mL

Restrictions: For Research Use only

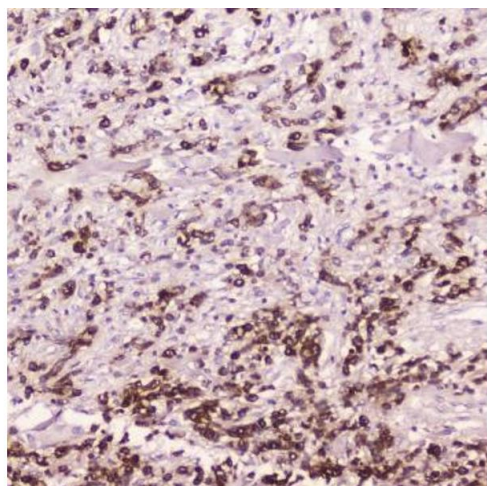
## Handling

Buffer: 0.5 mg/mL if reconstituted with 0.2 mL sterile DI water

Storage: -20 °C

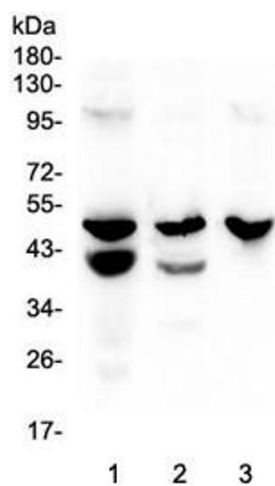
Storage Comment: After reconstitution, the Cathepsin E antibody can be stored for up to one month at 4°C. For long-term, aliquot and store at -20°C. Avoid repeated freezing and thawing.

## Images



### Immunohistochemistry

**Image 1.** IHC testing of FFPE human gastric cancer with Cathepsin E antibody at 2ug/ml. HIER: boil tissue sections in pH6, 10mM citrate buffer, for 10-20 min followed by cooling at RT for 20 min.



Western Blotting

**Image 2.** Western blot testing of 1) rat stomach, 2) mouse stomach and 3) mouse SP2/0 lysate with Cathepsin E antibody at 0.5ug/ml. Predicted molecular weight ~43 kDa.