

Datasheet for ABIN6654108  
**anti-CRP antibody (AA 20-230)**



[Go to Product page](#)

3 Images

## Overview

Quantity:	100 µg
Target:	CRP
Binding Specificity:	AA 20-230
Reactivity:	Rat
Host:	Rabbit
Clonality:	Polyclonal
Conjugate:	This CRP antibody is un-conjugated
Application:	Western Blotting (WB), ELISA, Immunohistochemistry (Paraffin-embedded Sections) (IHC (p))

## Product Details

Immunogen:	Rat C-Reactive Protein recombinant protein (amino acids H20-S230) was used as the immunogen for the C-Reactive Protein antibody.
Isotype:	IgG
Purification:	Antigen affinity purified

## Target Details

Target:	CRP
Alternative Name:	CRP / C-Reactive Protein ( <a href="#">CRP Products</a> )
Background:	C Reactive Protein (CRP) is a major acute phase reactant synthesized primarily in the liver hepatocytes. It is composed of 5 identical, 21,500-molecular weight subunits. CRP mediates activities associated with preimmune nonspecific host resistance. CRP shows the strongest

## Target Details

association with cardiovascular events. It is detectable on the surface of about 4 % of normal peripheral blood lymphocytes. Acute phase reactant CRP is produced in the liver.

UniProt: [P48199](#)

Pathways: [Carbohydrate Homeostasis](#)

## Application Details

Application Notes: Optimal dilution of the C-Reactive Protein antibody should be determined by the researcher.\.  
Western blot: 0.5-1 µg/mL,Immunohistochemistry (FFPE): 1-2 µg/mL,Direct ELISA: 0.1-0.5 µg/mL (rat recombinant protein)

Restrictions: For Research Use only

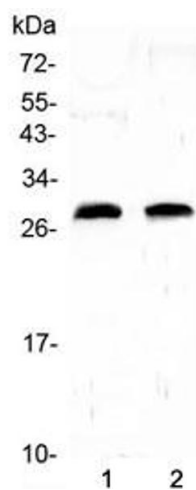
## Handling

Buffer: 0.5 mg/mL if reconstituted with 0.2 mL sterile DI water

Storage: -20 °C

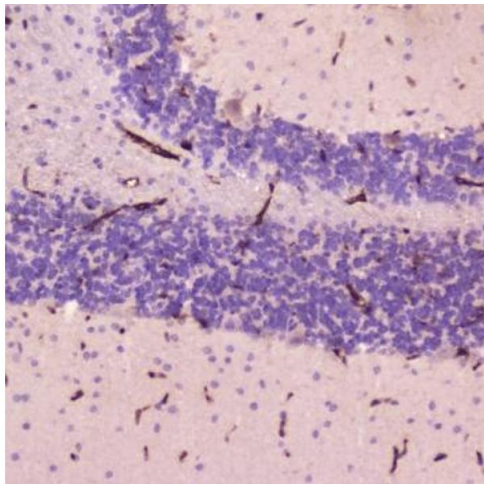
Storage Comment: After reconstitution, the C-Reactive Protein antibody can be stored for up to one month at 4°C.  
For long-term, aliquot and store at -20°C. Avoid repeated freezing and thawing.

## Images



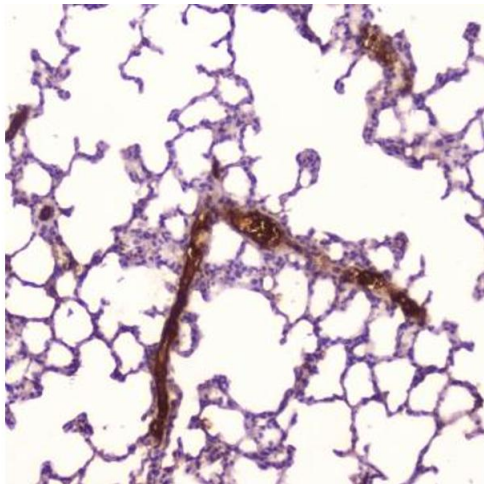
### Western Blotting

**Image 1.** Western blot testing of 1) rat heart and 2) rat lung lysate with C-Reactive Protein antibody at 0.5ug/ml. Predicted molecular weight ~26 kDa.



#### Immunohistochemistry

**Image 2.** IHC testing of FFPE human cerebellum tissue with C-Reactive Protein antibody at 2ug/ml. HIER: boil tissue sections in pH6, 10mM citrate buffer, for 10-20 min followed by cooling at RT for 20 min.



#### Immunohistochemistry

**Image 3.** IHC testing of FFPE human lung tissue with C-Reactive Protein antibody at 2ug/ml. HIER: boil tissue sections in pH6, 10mM citrate buffer, for 10-20 min followed by cooling at RT for 20 min.