



[Go to Product page](#)

Datasheet for ABIN6654150

anti-beta Catenin antibody (AA 2-233)

4 Images

Overview

| | |
|----------------------|--|
| Quantity: | 100 µg |
| Target: | beta Catenin (CATNB) |
| Binding Specificity: | AA 2-233 |
| Reactivity: | Human |
| Host: | Mouse |
| Clonality: | Monoclonal |
| Conjugate: | This beta Catenin antibody is un-conjugated |
| Application: | Western Blotting (WB), Flow Cytometry (FACS), Immunohistochemistry (Paraffin-embedded Sections) (IHC (p)), Immunocytochemistry (ICC) |

Product Details

| | |
|---------------|---|
| Immunogen: | Human beta Catenin recombinant protein (amino acids A2-K233) was used as the immunogen for the Beta Catenin antibody. |
| Clone: | 1F6 |
| Isotype: | IgG1 |
| Purification: | Protein G affinity |

Target Details

| | |
|-------------------|---|
| Target: | beta Catenin (CATNB) |
| Alternative Name: | Beta Catenin (CATNB Products) |

Target Details

Background: Catenins are proteins found in complexes with cadherin cell adhesion molecules of animal cells. The first two catenins that were identified became known as alpha-catenin and beta-catenin. Alpha-catenin can bind to beta-catenin and can also bind actin. Beta-catenin binds the cytoplasmic domain of some cadherins. Beta-catenin is an adherens junction protein. It plays an important role in various aspects of liver biology including liver development (both embryonic and postnatal), liver regeneration following partial hepatectomy. HGF-induced hepatomegaly, liver zonation, and pathogenesis of liver cancer.

UniProt: [P35222](#)

Pathways: [Peptide Hormone Metabolism](#)

Application Details

Application Notes: Optimal dilution of the Beta Catenin antibody should be determined by the researcher.\.
Western blot: 0.5-1 µg/mL,IHC (FFPE): 1-2 µg/mL,ICC: 2-4 µg/mL,FACS: 1-3 µg/10⁶ cells

Restrictions: For Research Use only

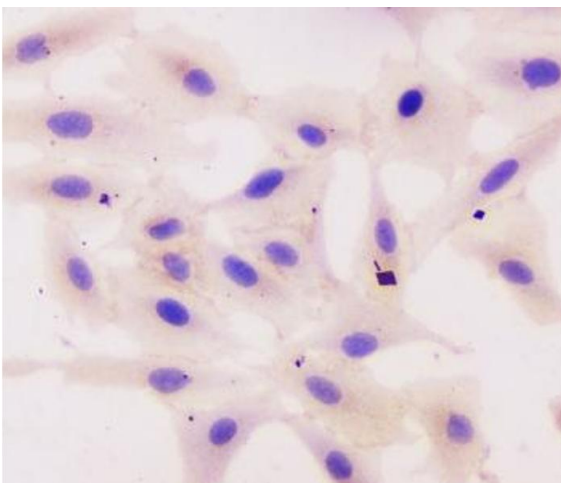
Handling

Buffer: 0.5 mg/mL if reconstituted with 0.2 mL sterile DI water

Storage: -20 °C

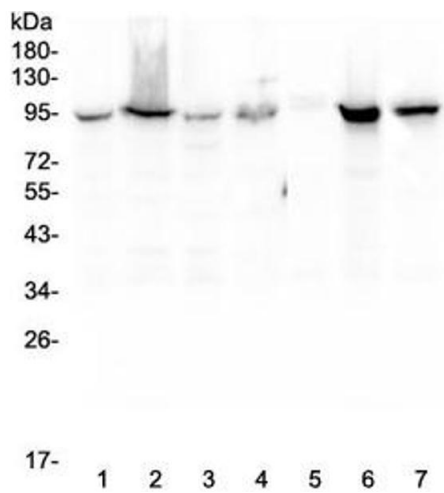
Storage Comment: After reconstitution, the Beta Catenin antibody can be stored for up to one month at 4°C. For long-term, aliquot and store at -20°C. Avoid repeated freezing and thawing.

Images



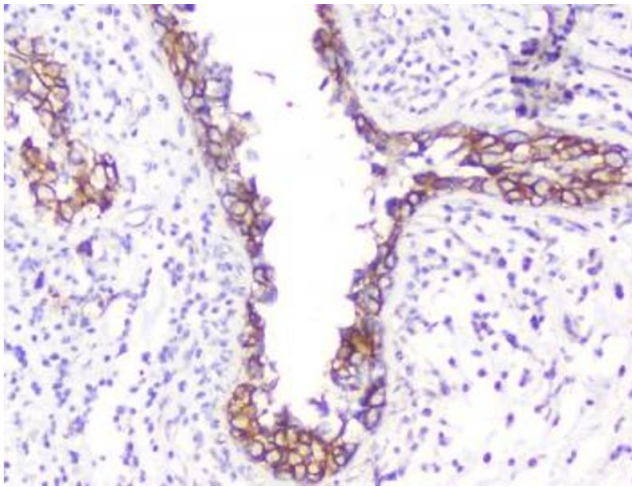
Immunocytochemistry

Image 1. ICC testing of human A549 cells with Beta Catenin antibody.



Western Blotting

Image 2. Western blot testing of human 1) HeLa, 2) COLO-320, 3) HepG2, 4) MCF7, 5) SW620, 6) 22RV1 and 7) Jurkat lysate with Beta Catenin antibody. Predicted molecular weight ~85 kDa, but routinely observed at 90-95 kDa.



Immunohistochemistry

Image 3. IHC testing of FFPE human breast cancer with Beta Catenin antibody. HIER: boil tissue sections in pH6, 10mM citrate buffer, for 10-20 min followed by cooling at RT for 20 min.

Please check the [product details page](#) for more images. Overall 4 images are available for ABIN6654150.