

Datasheet for ABIN6654156
anti-XPO1 antibody (AA 966-1071)



[Go to Product page](#)

2 Images

Overview

Quantity:	100 µg
Target:	XPO1
Binding Specificity:	AA 966-1071
Reactivity:	Human, Mouse, Rat
Host:	Mouse
Clonality:	Monoclonal
Conjugate:	This XPO1 antibody is un-conjugated
Application:	Western Blotting (WB), Immunohistochemistry (Paraffin-embedded Sections) (IHC (p))

Product Details

Immunogen:	Human Exportin-1 recombinant protein (amino acids N966-D1071) was used as the immunogen for the XPO1 antibody.
Clone:	5G3
Isotype:	IgG2b
Purification:	Protein G affinity

Target Details

Target:	XPO1
Alternative Name:	XPO1 (XPO1 Products)
Background:	Exportin 1 (XPO1), also known as chromosomal maintenance 1 (CRM1), is an eukaryotic

Target Details

protein that mapped to human chromosome 2p16 by fluorescence in situ hybridization. This protein mediates leucine-rich nuclear export signal (NES)-dependent protein transport. It specifically inhibits the nuclear export of Rev and U snRNAs. Additionally, this protein is involved in the control of several cellular processes by controlling the localization of cyclin B, MPAK, and MAPKAP kinase 2. It also regulates NFAT and AP-1.

UniProt:	O14980
Pathways:	M Phase

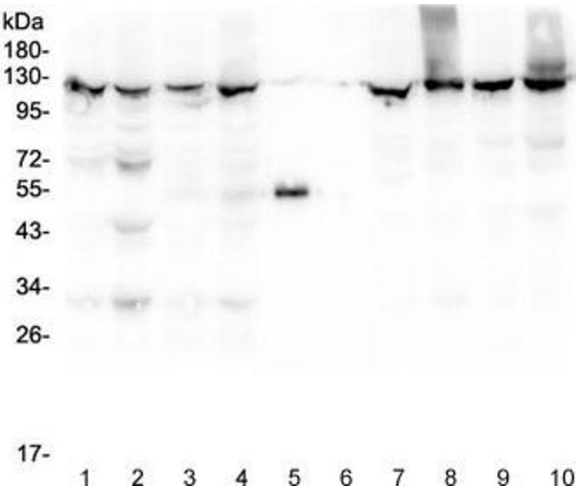
Application Details

Application Notes:	Optimal dilution of the XPO1 antibody should be determined by the researcher.\. Western blot: 0.5-1 µg/mL,Immunohistochemistry (FFPE): 1-2 µg/mL
Restrictions:	For Research Use only

Handling

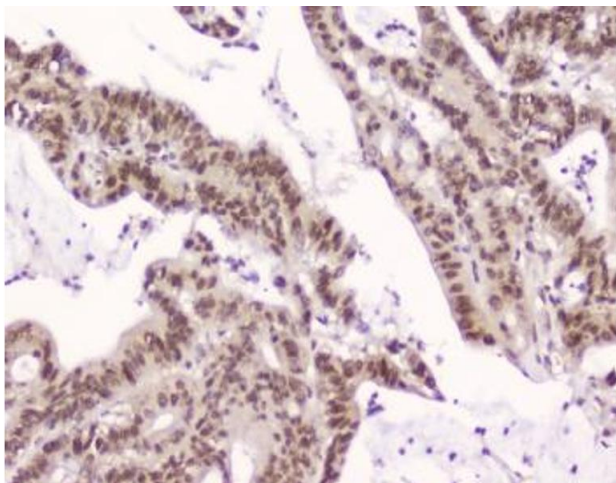
Buffer:	0.5 mg/mL if reconstituted with 0.2 mL sterile DI water
Storage:	-20 °C
Storage Comment:	After reconstitution, the XPO1 antibody can be stored for up to one month at 4°C. For long-term, aliquot and store at -20°C. Avoid repeated freezing and thawing.

Images



Western Blotting

Image 1. Western blot testing of 1) rat liver, 2) rat lung, 3) mouse liver, 4) mouse lung, 5) rabbit IgG, 6) molecular weight marker, 7) human HepG2, 8) human SMMC-7721, 9) human HeLa and 10) human Jurkat lysate with XPO1 antibody at 0.5ug/ml. Expected molecular weight ~123 kDa.



Immunohistochemistry

Image 2. IHC testing of FFPE human intestinal cancer with XPO1 antibody at 2ug/ml. HIER: boil tissue sections in pH6, 10mM citrate buffer, for 10-20 min followed by cooling at RT for 20 min.