

Datasheet for ABIN6654183  
**anti-IL36A/IL1F6 antibody (AA 6-151)**[Go to Product page](#)

## 2 Images

## Overview

Quantity:	100 µg
Target:	IL36A/IL1F6 (IL1F6)
Binding Specificity:	AA 6-151
Reactivity:	Human, Mouse, Rat
Host:	Rabbit
Clonality:	Polyclonal
Conjugate:	This IL36A/IL1F6 antibody is un-conjugated
Application:	Western Blotting (WB), ELISA, Immunohistochemistry (Paraffin-embedded Sections) (IHC (p))

## Product Details

Immunogen:	Human IL-36 alpha recombinant protein (amino acids K6-D151) was used as the immunogen for the IL36A antibody.
Isotype:	IgG
Purification:	Antigen affinity purified

## Target Details

Target:	IL36A/IL1F6 (IL1F6)
Alternative Name:	IL-36 alpha / IL-1F6 ( <a href="#">IL1F6 Products</a> )
Background:	Interleukin-36 alpha also known as interleukin-1 family member 6 (IL1F6) is a protein that in humans is encoded by the IL36A gene. The protein encoded by this gene is a cytokine that can activate NF-kappa-B and MAPK signaling pathways to generate an inflammatory response. The

## Target Details

encoded protein functions primarily in skin and demonstrates increased expression in psoriasis. In addition, decreased expression of this gene has been linked to a poor prognosis in both hepatocellular carcinoma and colorectal cancer patients.

UniProt: [Q9UHA7](#)

Pathways: [Cancer Immune Checkpoints](#)

## Application Details

Application Notes: Optimal dilution of the IL36A antibody should be determined by the researcher.\. Western blot: 0.5-1 µg/mL, Immunohistochemistry (FFPE): 1-2 µg/mL, ELISA (capture): 1-5 µg/mL

Restrictions: For Research Use only

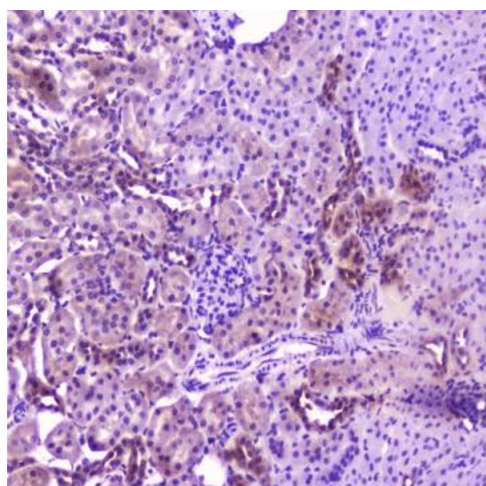
## Handling

Buffer: 0.5 mg/mL if reconstituted with 0.2 mL sterile DI water

Storage: -20 °C

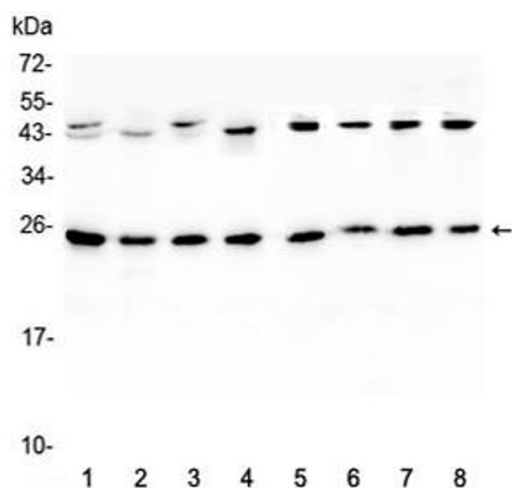
Storage Comment: After reconstitution, the IL36A antibody can be stored for up to one month at 4°C. For long-term, aliquot and store at -20°C. Avoid repeated freezing and thawing.

## Images



### Immunohistochemistry

**Image 1.** IHC testing of FFPE rat kidney with IL36A antibody at 2µg/ml. HIER: boil tissue sections in pH6, 10mM citrate buffer, for 10-20 min followed by cooling at RT for 20 min.



### Western Blotting

**Image 2.** Western blot testing of 1) rat brain, 2) rat lung, 3) mouse brain, 4) mouse lung and human 5) HeLa, 6) placenta, 7) MCF7 and 8) HepG2 lystate with IL36A antibody at 0.5ug/ml. Predicted molecular weight ~17 kDa, routinely observed at 18-22 kDa.