

Datasheet for ABIN6655054  
**anti-Calretinin antibody**



[Go to Product page](#)

2 Images

1 Publication

## Overview

Quantity:	100 µL
Target:	Calretinin (CALB2)
Reactivity:	Guinea Pig
Host:	Sheep
Clonality:	Polyclonal
Conjugate:	This Calretinin antibody is un-conjugated
Application:	Western Blotting (WB), Immunohistochemistry (IHC), ELISA, Fluorescence Microscopy (FM)

## Product Details

Immunogen:	Immunogen: Anti-Calretinin Antibody was produced by repeated immunizations with native guinea pig calretinin. Immunogen Type: Native Protein
Isotype:	IgG
Cross-Reactivity:	Guinea Pig, Rat (Rattus)
Cross-Reactivity (Details):	Cross reactivity with Calretinin from other species has not been determined
Purification:	Anti-Calretinin Antibody is directed against guinea pig Calretinin protein. The antibody was purified from monospecific antiserum by Protein A chromatography. Anti-Calretinin antibody reacts with Calretinin from rat and guinea pig sources. . However, reactivity is also expected from the following species based on 100% sequence homology: human, mouse, non-human primates.

## Target Details

---

Target:	Calretinin (CALB2)
Alternative Name:	Calretinin ( <a href="#">CALB2 Products</a> )
Background:	<p>Synonyms: CR, Calb2, CAB29</p> <p>Background: Calretinin antibody reacts with calretinin which is a calcium-binding protein involved in calcium signaling. Calretinin is abundantly expressed throughout the central nervous system, retina and many other tissues. Studies have shown that calretinin may play a role in neuroprotection by buffering intracellular calcium. Additionally, calretinin selectively stains mesothelial cells thus making it an important marker for differentiating malignant mesothelioma from carcinomas. Anti-Calretinin antibody is ideal for investigators involved in Cell Signaling, Neuroscience, Signal Transduction research.</p> <p>Gene Name: CALB2</p>
Gene ID:	117059
NCBI Accession:	<a href="#">NP_446440</a>
UniProt:	<a href="#">P47728</a>

## Application Details

---

Application Notes:	<p>Immunohistochemistry Dilution: 1:500</p> <p>Application Note: Anti-Calretinin antibody is suitable for use in ELISA, Western Blotting, IHC and IF. Specific conditions for reactivity should be optimized by the end user. Expect a band of approximately 29 kDa in size corresponding to the calretinin protein in Western blots using rat brain lysate. Use this calretinin antibody for Immunohistochemistry on formalin or paraformaldehyde perfused rat brain tissue sections.</p> <p>ELISA Dilution: 1:10,000</p> <p>Western Blot Dilution: 1:1000</p> <p>IF Microscopy Dilution: 1:500</p>
Restrictions:	For Research Use only

## Handling

---

Format:	Liquid
Buffer:	0.01 M Tris Cl, 0.15 M Sodium Chloride, 0.001 M EDTA, pH 7.4
Storage:	4 °C,-20 °C
Storage Comment:	Store vial at -20° C prior to opening. This product is stable at 4° C as an undiluted liquid. For

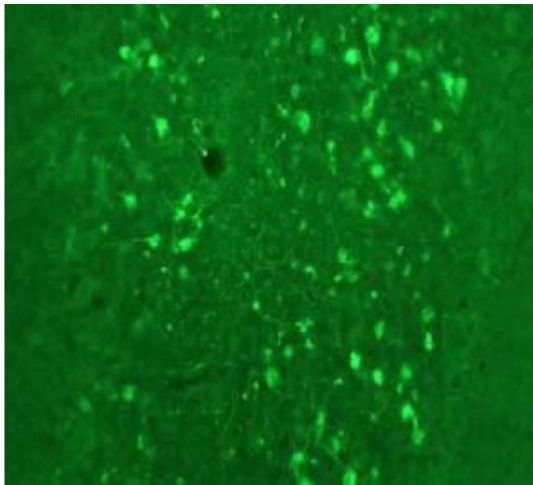
## Handling

extended storage, aliquot contents and freeze at -20° C or below. Avoid cycles of freezing and thawing. Dilute only prior to immediate use.

## Publications

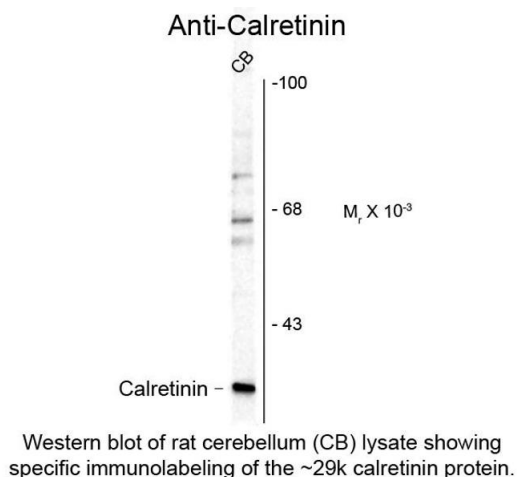
Product cited in: Molgaard, Ulrichsen, Boggild, Holm, Vaegter, Nyengaard, Glerup: "Immunofluorescent visualization of mouse interneuron subtypes." in: **F1000Research**, Vol. 3, pp. 242, (2014) ([PubMed](#)).

## Images



### Immunofluorescence

**Image 1.** Immunofluorescence Microscopy of Anti-Calretinin (Sheep) Antibody. Tissue: rat cerebellum. Fixation: 0.5% PFA. Antigen retrieval: not required. Primary antibody: Calretinin antibody at 10 µg/mL for 1 h at RT. Secondary antibody: Fluorescein sheep secondary antibody at 1:10,000 for 45 min at RT. Localization: Calretinin is neuronal. Staining: Calretinin as green fluorescent signal.



### Western Blotting

**Image 2.** Western Blot of Anti-Calretinin (Sheep) Antibody - 200-601-D13. Lane 1: rat cerebellum lysate. Lane 2: none. Load: 10 µg per lane. Primary antibody: Calretinin antibody at 1:400 for overnight at 4°C. Secondary antibody: sheep secondary antibody at 1:10,000 for 45 min at RT. Block: 5% BLOTTO overnight at 4°C. Predicted/Observed size: ~29kDa/~29kDa for calretinin protein. Other band(s): none.