

Datasheet for ABIN6655070
anti-ATF6 antibody (N-Term)

2 Images



[Go to Product page](#)

Overview

Quantity:	100 µg
Target:	ATF6
Binding Specificity:	N-Term
Reactivity:	Human
Host:	Rabbit
Clonality:	Polyclonal
Conjugate:	This ATF6 antibody is un-conjugated
Application:	Western Blotting (WB), Immunohistochemistry (IHC), ELISA, Immunoprecipitation (IP), Immunofluorescence (IF), Flow Cytometry (FACS), Fluorescence Microscopy (FM)

Product Details

Purpose:	ATF6 Antibody
Immunogen:	Anti-ATF6 antibody was prepared from whole rabbit serum produced by repeated immunizations with a synthetic peptide corresponding to a N-Term portion of human ATF6 conjugated to Keyhole Limpet Hemocyanin (KLH).
Isotype:	IgG
Cross-Reactivity (Details):	This affinity purified antibody is directed against human ATF6.
Purification:	This product was affinity purified from monospecific antiserum by immunoaffinity purification.
Sterility:	Sterile filtered

Target Details

Target:	ATF6
Alternative Name:	ATF6 (ATF6 Products)
Background:	<p>Synonyms: rabbit anti-ATF6 Antibody, Activating Transcription Factor 6, rabbit anti-ATF-6 Antibody, Cyclic AMP-dependent transcription factor ATF-6 alpha, Activating transcription factor 6 alpha, ATF6 alpha</p> <p>Background: ATF6 belongs to the bZIP (basic-leucine zipper domain transcription factor) family. Activating target genes for the unfolded protein response during endoplasmic reticulum stress. Embedded in the endoplasmic reticulum, it functions as an ER stress sensor/stress transducer. Following stress-induced proteolysis it functions as a nuclear transcription factor via a cis-acting ER stress response element (ERSE) that is present in the promoters of genes encoding ER chaperones. Binds DNA on the 5'-CCAC[GA]-3' half of the ER stress response element (ERSE) (5'-CCAAT-N(9)-CCAC[GA]-3') and of ERSE II (5'-ATTGG-N-CCACG-3'). Binding to ERSE requires binding of NF-Y to ERSE. ATF6 could also be involved in the activation of transcription by the serum response factor. This protein may play a role in the development of the foveal and cone function in the retina. Therefore, attributing to disorders such as achromatopsia, blindness, nystagmus, myopia, cataracts and more. Anti-ATF6 Antibody is useful for researchers studying eye development, protein folding and processing, Endoplasmic Reticulum Stress Pathways, Glucose and Energy Metabolism Research.</p> <p>Gene Name: ATF6</p>
Gene ID:	22926
NCBI Accession:	NP_031374
UniProt:	P18850
Pathways:	ER-Nucleus Signaling , Unfolded Protein Response

Application Details

Application Notes:	<p>Immunoprecipitation_Dilution: User Optimized</p> <p>ELISA_Dilution: 5.0 µg/mL</p> <p>Immunohistochemistry_Dilution: 1:200</p> <p>Flow_Cytometry_Dilution: User Optimized</p> <p>IF_Microscopy_Dilution: 10 µg/mL</p> <p>Western_Blot_Dilution: 0.5 µg/mL</p>
Comment:	Anti-ATF6 Antibody has been tested in Western Blot, IF and ELISA. Recombinant ATF6 protein positive control was used for western blotting. Expect a band at 74.5kDa in western blot using

Application Details

appropriate lysates or recombinant protein. Antibody tested positive in U251 cells (W09-001-GY4) in Immunofluorescence. Although not tested, this antibody is likely functional in immunohistochemistry, flow cytometry, and immunoprecipitation.

Restrictions: For Research Use only

Handling

Format: Liquid

Buffer: 0.02 M Potassium Phosphate, 0.15 M Sodium Chloride, pH 7.2

Stabilizer: None

Preservative: 0.01 % (w/v) Sodium Azide

Preservative: Sodium azide

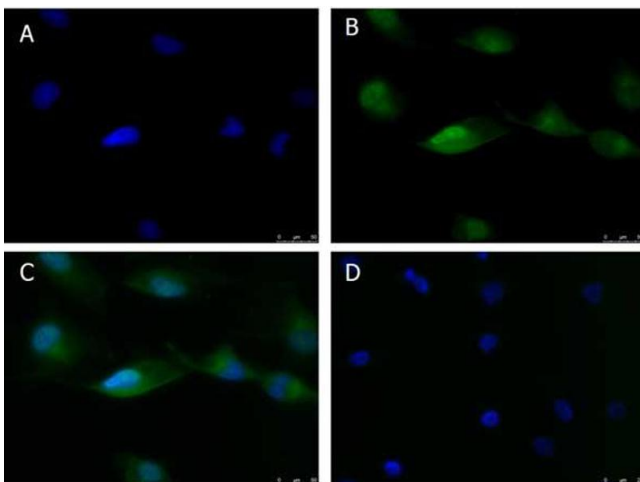
Precaution of Use: This product contains Sodium azide: a POISONOUS AND HAZARDOUS SUBSTANCE which should be handled by trained staff only.

Storage: 4 °C, -20 °C

Storage Comment: Store vial at -20° C prior to opening. Aliquot contents and freeze at -20° C or below for extended storage. Avoid cycles of freezing and thawing. Centrifuge product if not completely clear after standing at room temperature. This product is stable for several weeks at 4° C as an undiluted liquid. Dilute only prior to immediate use.

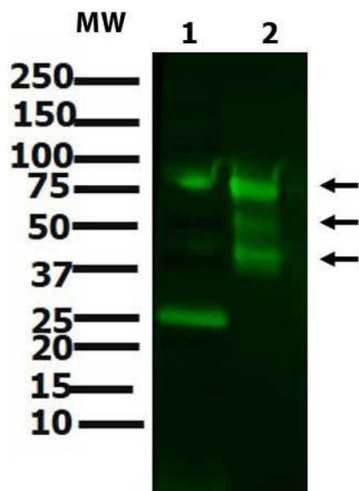
Expiry Date: 12 months

Images



Immunofluorescence

Image 1. Immunofluorescence of Anti-ATF6 (RABBIT) Antibody Immunofluorescence Microscopy of Rabbit anti-ATF6 antibody. Tissue: U-251 cells p/n (W09-001-GY4). Fixation: 0.5% PFA. Antigen retrieval: not required. Primary antibody: ATF6 antibody at 10 µg/mL overnight at 4°C. Secondary antibody: Anti-RABBIT IgG 488 Conjugated Preadsorbed at 5 µg/ml for 2 h at RT. Localization: ATF6 is cell membrane and cytoplasmic. Staining: ATF6 as green fluorescent signal with DAPI (blue) nuclear counterstain.



Western Blotting

Image 2. Western blot of Anti-ATF6 (RABBIT) Antibody
 Western Blot of Rabbit anti-ATF6 antibody. Lane 1: MW ladder. Lane 2: ATF6 rProtein. Load: 1 μ g per lane. Primary antibody: ATF6 antibody at 1:2000 for overnight at 4°C. Secondary antibody: rabbit secondary HRP antibody at 1:10,000 for one hour at RT. Block: BlockOut p/n () two hours 4°C. Predicted/Observed size: ~74.5 kDa for ATF6. Other: 50, 37 kDa.