



[Go to Product page](#)

Datasheet for ABIN6655105

anti-Cyclin L1 antibody (AA 314-369)

2 Images

1 Publication

Overview

Quantity:	500 µg
Target:	Cyclin L1 (CCNL1)
Binding Specificity:	AA 314-369
Reactivity:	Human
Host:	Rabbit
Clonality:	Polyclonal
Conjugate:	This Cyclin L1 antibody is un-conjugated
Application:	Western Blotting (WB), ELISA, Immunohistochemistry (IHC), Immunoprecipitation (IP)

Product Details

Immunogen:	Immunogen: This Protein A purified antibody was prepared from whole rabbit serum produced by repeated immunizations with a synthetic polypeptide corresponding to amino acids 314-369 of Human Cyclin L1a protein. Immunogen Type: Peptide
Isotype:	IgG
Cross-Reactivity (Details):	Cross reactivity with Cyclin L1a protein from dog, rat, mouse and chicken is expected, as this sequence shows 87-96 % homology with the protein from these sources. Cross reactivity with Cyclin L1a homologues from other sources has not been determined.
Purification:	The product was purified from monospecific antiserum by Protein A chromatography. This antibody is specific for human Cyclin L1a and shows negligible reactivity to Cyclin L1b or Cyclin L2 isoforms. A BLAST analysis was used to suggest reactivity with this protein from human

Product Details

and chimpanzee based on 100% homology for the immunogen sequence. Cross reactivity with Cyclin L1a protein from dog, rat, mouse and chicken is expected, as this sequence shows 87-96% homology with the protein from these sources. Cross reactivity with Cyclin L1a homologues from other sources has not been determined.

Target Details

Target: Cyclin L1 (CCNL1)

Alternative Name: Cyclin L1 ([CCNL1 Products](#))

Background: Synonyms: rabbit anti-Cyclin L1 antibody, Cyclin-L, Cyclin L beta, Cyclin L gamma, CCNL1
Background: Cyclin L (also referred to as CCNL) is encoded by two highly related genes Cyclin L1 and Cyclin L2 (CCNL1 and CCNL2, respectively). Cyclin L has been shown to associate with the PITSLRE kinase and is involved in pre-mRNA processing. Both Cyclin L gene products can be alternatively spliced to produce two isoforms (known as 1 and 2 or alpha and beta). Cyclin L2 is ubiquitous, expressed at much higher levels than Cyclin L1, and thus is likely the major partner for the CDK11p110 protein kinase.
Gene Name: CCNL1

Gene ID: 57018

NCBI Accession: [NP_064703](#)

UniProt: [Q9UK58](#)

Application Details

Application Notes: Immunohistochemistry Dilution: 10 mg/mL - 20 µg/mL
Application Note: This Protein A purified antibody has been tested for use in ELISA, immunohistochemistry, western blot, and immunoprecipitation. Specific conditions for reactivity should be optimized by the end user. Expect a band ~ 59 kDa in size corresponding to Cyclin L1a by western blotting in the appropriate cell lysate or extract.
Immunoprecipitation Dilution: 1:100
ELISA Dilution: 1:5,000 - 1:25,000
Western Blot Dilution: 1:2,000 - 1:5,000

Restrictions: For Research Use only

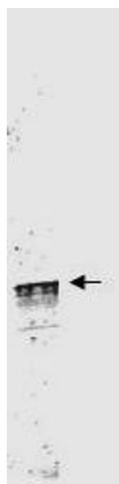
Handling

Format:	Lyophilized
Reconstitution:	Reconstitution Volume: 100 μ L Reconstitution Buffer: Restore with deionized water (or equivalent)
Buffer:	Buffer: 0.02 M Potassium Phosphate, 0.15 M Sodium Chloride, pH 7.2 0.01 % (w/v) Sodium Azide Stabilizer: None
Preservative:	Sodium azide
Precaution of Use:	This product contains Sodium azide: a POISONOUS AND HAZARDOUS SUBSTANCE which should be handled by trained staff only.
Storage:	RT, 4 °C, -20 °C
Storage Comment:	Store vial at 4° C prior to restoration. For extended storage aliquot contents and freeze at -20° C or below. Avoid cycles of freezing and thawing. Centrifuge product if not completely clear after standing at room temperature. This product is stable for several weeks at 4° C as an undiluted liquid. Dilute only prior to immediate use.

Publications

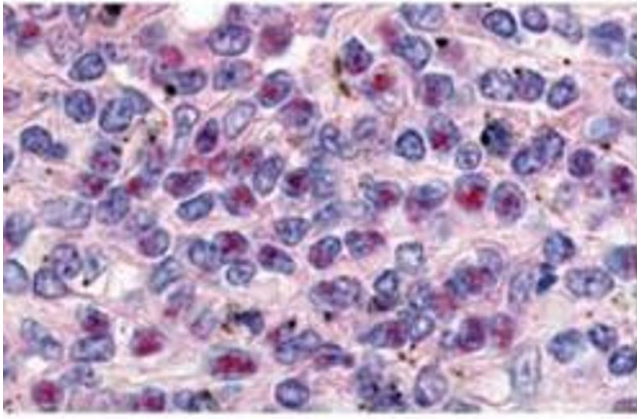
Product cited in:	Loyer, Trembley, Katona, Kidd, Lahti: "Role of CDK/cyclin complexes in transcription and RNA splicing." in: Cellular signalling , Vol. 17, Issue 9, pp. 1033-51, (2005) (PubMed).
-------------------	--

Images



Western Blotting

Image 1. Anti-Cyclin L1a Antibody - Western Blot. Western blot using Protein A Purified anti-Cyclin L1a antibody shows detection of a band ~59 kDa corresponding to a Cyclin L1a (arrowhead) present in mouse brain whole cell lysate. Approximately 35 μ g of lysate was separated by 4-20% SDS-PAGE followed by transfer to nitrocellulose. After blocking the membrane was probed with the primary antibody diluted to 1:3,500 for 2h at room temperature followed by washes and reaction with a 1:10,000 dilution of 800 conjugated Gt-a-Rabbit IgG [H&L] MX for 45 min at room



temperature.800 fluorescence image was captured using the Infrared Imaging System developed by LI-COR. IRDye is a trademark of LI-COR, Inc. Other detection systems will yield similar results.

Immunohistochemistry

Image 2. Anti-Cyclin L1a Antibody - Immunohistochemistry anti-Cyclin L1a antibody was used at a 10 µg/ml to detect Cyclin L1a in a variety of tissues including breast (collagen), heart, kidney (distal tubules), liver, skeletal muscle, ovary (granulosa and oocyte), pancreas (islet), placenta (trophoblast), prostate (epithelium), skin, spleen (endothelium), stomach (chief), testes (seminiferous epithelium and leydig), thymus (Has-sal's corpuscle and lymphocytes) and uterus (glandular epithelium and stroma). Low to moderate background staining was noted. This image shows Cyclin L1a staining of human spleen. Tissue was formalin-fixed and paraffin embedded. Personal Communication, Tina Roush, LifeSpanBiosciences, Seattle, WA.