

Datasheet for ABIN6655112  
**anti-CD25 antibody (FITC)**



[Go to Product page](#)

**1** Image **2** Publications

## Overview

Quantity:	500 µL
Target:	CD25 (IL2RA)
Reactivity:	Human
Host:	Mouse
Clonality:	Monoclonal
Conjugate:	This CD25 antibody is conjugated to FITC
Application:	Flow Cytometry (FACS), Immunohistochemistry (IHC)

## Product Details

Purpose:	CD25 Fluorescein Antibody
Immunogen:	Anti-CD25 Antibody (Monoclonal) was produced by repeated immunizations with CD25 antigen.
Clone:	BC96
Isotype:	IgG1 kappa
Cross-Reactivity (Details):	Reactivity is observed against human CD25, Baboon, Chimpanzee, Cynomolgus, Rhesus, and Pigtailed Macaque.
Purification:	Fluorescein conjugated CD25 Monoclonal Antibody was purified from tissue culture supernatant via affinity chromatography and is directed against human CD25.
Sterility:	Sterile filtered
Labeling Ratio:	4-6

## Target Details

---

Target:	CD25 (IL2RA)
Alternative Name:	<a href="#">CD25 (IL2RA Products)</a>
Background:	<p>Synonyms: Interleukin-2 receptor subunit alpha, IL-2 receptor subunit alpha, IL-2-RA, IL-2R subunit alpha, IL2-RA, TAC antigen, p55</p> <p>Background: CD25 is a 55 kD type I transmembrane glycoprotein also known as the low affinity IL-2 receptor <math>\alpha</math> chain or Tac. It is expressed on progenitor lymphocytes, activated T and B cells, and activated monocytes/macrophages. CD25 is also expressed on a subset of non-stimulated CD4+ T cells termed T regulatory cells. CD25 associates with the IL-2 receptor <math>\beta</math> (CD122) and common <math>\gamma</math> chains (CD132) to form the high affinity IL-2R complex.</p> <p>Gene Name: IL2RA</p>
Gene ID:	3559
NCBI Accession:	<a href="#">NP_000408</a>
UniProt:	<a href="#">P01589</a>
Pathways:	<a href="#">JAK-STAT Signaling</a> , <a href="#">Growth Factor Binding</a> , <a href="#">Activated T Cell Proliferation</a>

## Application Details

---

Application Notes:	<p>Immunohistochemistry_Dilution: User Optimized</p> <p>Flow_Cytometry_Dilution: 5 <math>\mu</math>L/1x10e6 cells or 100<math>\mu</math>L of whole blood</p>
Comment:	Anti-CD25 is tested for Flow Cytometry and is useful for Immunofluorescence. Researchers should determine optimal titers for applications that are not stated.
Restrictions:	For Research Use only

## Handling

---

Format:	Liquid
Buffer:	<p>Buffer: 0.02 M Potassium Phosphate, 0.15 M Sodium Chloride, pH 7.2</p> <p>Stabilizer: 0.2 % BSA (w/v)</p> <p>Preservative: 0.09 % (w/v) Sodium Azide</p>
Preservative:	Sodium azide
Precaution of Use:	This product contains Sodium azide: a POISONOUS AND HAZARDOUS SUBSTANCE which should be handled by trained staff only.
Storage:	4 °C

## Handling

Storage Comment: Store vial at 4° C prior to opening. This product is stable for several weeks at 4° C as an undiluted liquid. Dilute only prior to immediate use. DO NOT FREEZE. This product is light sensitive.

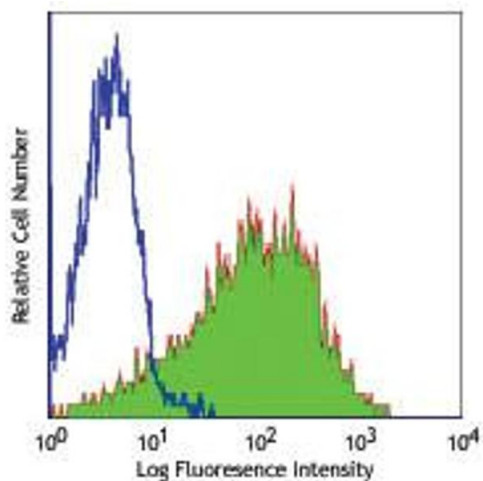
Expiry Date: 6 months

## Publications

Product cited in: Taniguchi, Minami: "The IL-2/IL-2 receptor system: a current overview." in: **Cell**, Vol. 73, Issue 1, pp. 5-8, (1993) ([PubMed](#)).

Waldmann: "The interleukin-2 receptor." in: **The Journal of biological chemistry**, Vol. 266, Issue 5, pp. 2681-4, (1991) ([PubMed](#)).

## Images



### Flow Cytometry

**Image 1.** Flow Cytometry - Mouse anti-CD25 FITC Flow Cytometry of Mouse anti-CD25 Fluorescein Conjugated Monoclonal Antibody. Cells: human peripheral blood lymphocytes. Stimulation: PHA (3 day). Antibody: (Dotted Line) FITC Mouse IgG1 kappa isotype control; (Solid Line) Fluorescein Anti-CD25 mouse antibody using 5 ul.